

City of Norman
ADA Self-Evaluation and Transition Plan
Unsignalized Intersection Cost Projection Summary - Buildings
4/30/2018

GPS ID	Project Name	Cost Projection	Priority
90005	Intersection of Municipal Complex and parking lot (Lat.35.2221; Long.-97.4476)	\$ 6,000	2
90007	Intersection of Municipal Complex and parking lot (Lat.35.2222; Long.-97.4467)	\$ 10,000	2
90008	Intersection of Municipal Complex and parking lot (Lat.35.2226; Long.-97.4463)	\$ 5,000	2
90009	Intersection of Municipal Complex and Daws St	\$ 9,000	13
90010	Intersection of Municipal Complex and parking lot (Lat.35.2225; Long.-97.4462)	\$ 5,000	2
90011	Intersection of Municipal Complex and James Garner Ave	\$ 2,000	2
90012	Intersection of Municipal Complex and Tonhawa St	\$ 5,000	2
90013	Intersection of Municipal Complex and parking lot (Lat.35.2223; Long.-97.4459)	\$ 1,000	2
90014	Intersection of Municipal Complex and N Santa Fe Ave	\$ 15,000	2
TOTAL		\$ 58,000	

Client: City of Norman Date: 4/30/18
 Program: ADA Self-Evaluation and Transition Plan Prepared By: CMP
 KHA No.: 061298800 Checked By: EPE

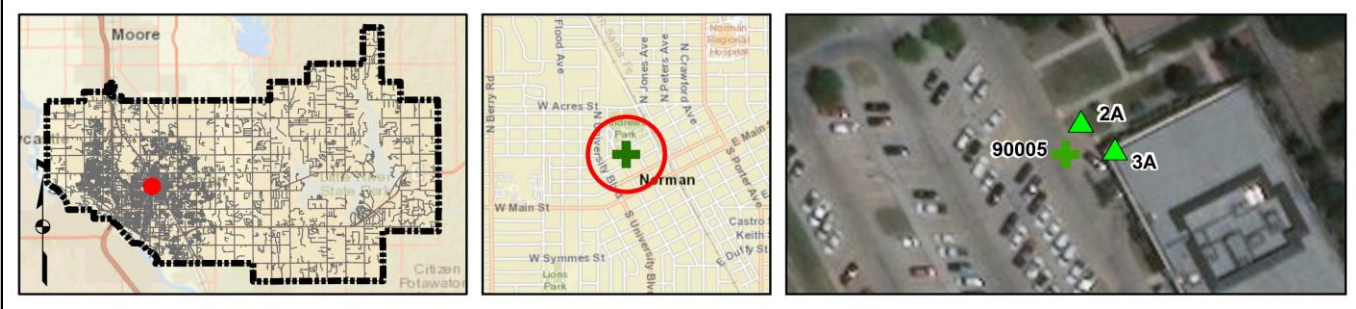
Corridor: Municipal Complex GPS ID: 90005
 Project Name: Intersection of Municipal Complex and parking lot (Lat.35.2221; Long.-97.4476)
 City: Norman

Item No.	Item Description	Quantity	Unit	Unit Price	Item Cost
ODOT 202(A)-0183	Unclassified Excavation	0	CY	\$ 5.50	\$ -
ODOT 609(A)-0300	Concrete Curb (6" Barrier-Integral)	0	LF	\$ 7.00	\$ -
ODOT 610(A)-0602	14" Concrete Sidewalk	15	SY	\$ 50.00	\$ 750.00
ODOT 610(I)-4610	Tactile Warning Device - New	20	SF	\$ 25.00	\$ 500.00
ODOT 610(I)-4615	Tactile Warning Device - Retrofit	0	SF	\$ 60.00	\$ -
ODOT 619(B)-4792	Removal of Sidewalk	22	SY	\$ 12.00	\$ 264.00
ODOT 857(F)-8006	Pavement Marking Removal (Traffic Stripe)	0	LF	\$ 0.25	\$ -
---	Crosswalk Pavement Markings	0	LF	\$ 6.00	\$ -
---	Repave Roadway	0	LS	\$ 5,000.00	\$ -
---	Fix Ponding	0	LS	\$ 2,000.00	\$ -
---	Fix Curb Ramp Transition	1	LS	\$ 2,000.00	\$ 2,000.00
---	Median Nose Modification	0	LS	\$ 5,000.00	\$ -
---	Remove Temporary Obstruction	1	LS	\$ 500.00	\$ 500.00
---	Fix Curb Ramp Counter Slope	0	LS	\$ 2,000.00	\$ -

Basis for Cost Projection

<input checked="" type="checkbox"/> No Design Completed	Subtotal:	\$	4,014.00
<input type="checkbox"/> Preliminary Design	Engineering: (% +/-)	15%	\$ 851.14
<input type="checkbox"/> Final Design	Contingency: (% +/-)	20%	\$ 1,134.86
	Estimated Project Cost:	\$	6,000.00

Project Location



Field Observations

Intersection Issues	Crosswalk				Possible Solutions
	N	E	S	W	
Path of travel pavement condition					All driveway path of travel issues and possible solutions provided in driveway shapefile (TRPEDDRV)
Path of travel running slope is greater than 5%					
Path of travel cross slope is greater than 2% for stop control approaches					
Path of travel cross slope is greater than 5% for free-flow approaches					
Crosswalk width is less than 6'					
Crosswalk striping condition					

Curb Ramp Issues	Curb Ramp ID ('z' or 'i' in ramp label indicates no existing ramp)		Possible Solutions
	2A	3A	
Curb ramp does not exist and is needed			Remove and replace curb ramp
Curb ramp does not land in crosswalk			
No 4' x 4' clear space at base of curb ramp			
Curbed side is not 90° or has traversable adjacent surface		X	
Flare cross slope is greater than 10%	X		
Curb ramp running slope is greater than 8.3%			
Blended transition running slope is greater than 5%			
Cut-thru ramp running slope is greater than 5%			
Curb ramp cross slope is greater than 2%			
Cut-thru ramp cross slope is greater than 2%			
Curb ramp width is less than 48"			Remove temporary obstruction
Cut-thru ramp width is less than 60"		X	
Permanent obstruction (>0.25") in curb ramp/landing/flares			Remove and replace landing area
Temporary obstruction (>0.25") in curb ramp/landing/flares		X	
No textured surface at base of curb ramp			Fix curb ramp transition
No color contrast at base of curb ramp			
Landing area does not exist and is needed			Remove and replace landing area
Landing area is less than 5' x 5' or slopes greater than 2%	X	X	
Curb ramp transition onto roadway is greater than 0.25"	X		Fix curb ramp transition
Counter slope of the gutter or street at the foot of the curb ramp is greater than 5%			
Ponding occurs at base of curb ramp			



Ramp 2A



Ramp 3A

Opinion of Probable Construction Cost Disclaimer:

The Engineer has no control over the cost of labor, materials, equipment, or over the Contractor's methods of determining prices or over competitive bidding or market conditions. Opinions of probable costs provided herein are based on the information known to Engineer at this time and represent only the Engineer's judgment as a design professional familiar with the construction industry. The Engineer cannot and does not guarantee that proposals, bids, or actual construction costs will not vary from its opinions of probable costs.

Project Location Map Sources:

Esri, DeLorme, NAVTEQ, USGS, Intermap, iPC, NRCAN, Esri Japan, METI, Esri China (Hong Kong), Esri (Thailand), TomTom, 2013, DigitalGlobe, GeoEye, i-cubed, USDA, AEX, Getmapping, Aerogrip, IGN, IGP, swisstopo, and the GIS User Community

Client: City of Norman Date: 4/30/18
 Program: ADA Self-Evaluation and Transition Plan Prepared By: CMP
 KHA No.: 061298800 Checked By: EPE

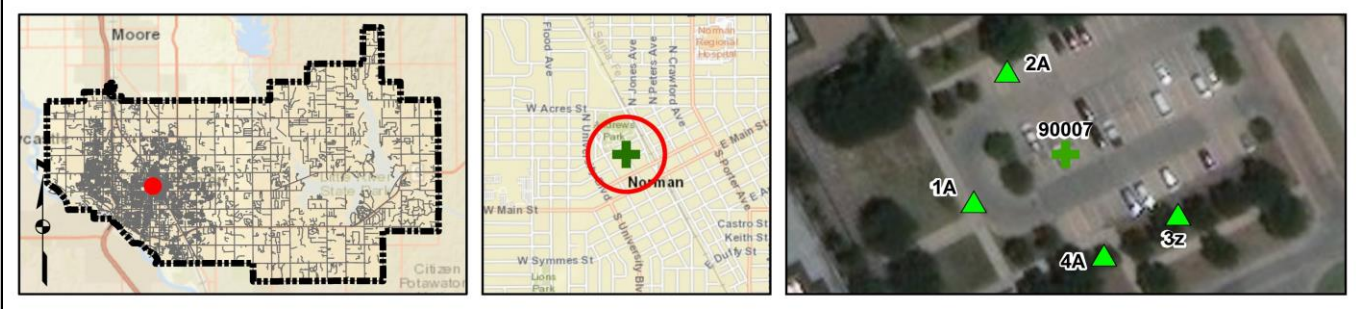
Corridor : Municipal Complex GPS ID: 90007
 Project Name: Intersection of Municipal Complex and parking lot (Lat.35.2222; Long.-97.4467)
 City: Norman

Item No.	Item Description	Quantity	Unit	Unit Price	Item Cost
ODOT 202(A)-0183	Unclassified Excavation	0	CY	\$ 5.50	\$ -
ODOT 609(A)-0300	Concrete Curb (6" Barrier-Integral)	0	LF	\$ 7.00	\$ -
ODOT 610(A)-0602	4" Concrete Sidewalk	30	SY	\$ 50.00	\$ 1,500.00
ODOT 610(I)-4610	Tactile Warning Device - New	20	SF	\$ 25.00	\$ 500.00
ODOT 610(I)-4615	Tactile Warning Device - Retrofit	10	SF	\$ 60.00	\$ 600.00
ODOT 619(B)-4792	Removal of Sidewalk	24	SY	\$ 12.00	\$ 288.00
ODOT 857(F)-8006	Pavement Marking Removal (Traffic Stripe)	0	LF	\$ 0.25	\$ -
---	Crosswalk Pavement Markings	0	LF	\$ 6.00	\$ -
---	Repave Roadway	0	LS	\$ 5,000.00	\$ -
---	Fix Ponding	0	LS	\$ 2,000.00	\$ -
---	Fix Curb Ramp Transition	2	LS	\$ 2,000.00	\$ 4,000.00
---	Median Nose Modification	0	LS	\$ 5,000.00	\$ -
---	Remove Temporary Obstruction	0	LS	\$ 500.00	\$ -
---	Fix Curb Ramp Counter Slope	0	LS	\$ 2,000.00	\$ -

Basis for Cost Projection

<input checked="" type="checkbox"/> No Design Completed	Subtotal:	\$ 6,888.00
<input type="checkbox"/> Preliminary Design	Engineering: (% +/-)	15% \$ 1,333.71
<input type="checkbox"/> Final Design	Contingency: (% +/-)	20% \$ 1,778.29
	Estimated Project Cost:	\$ 10,000.00

Project Location



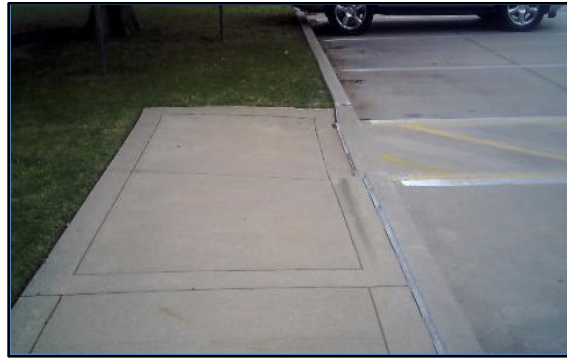
Field Observations

Intersection Issues	Crosswalk				Possible Solutions
	N	E	S	W	
Path of travel pavement condition					All driveway path of travel issues and possible solutions provided in driveway shapefile (TRPEDDRV)
Path of travel running slope is greater than 5%					
Path of travel cross slope is greater than 2% for stop control approaches					
Path of travel cross slope is greater than 5% for free-flow approaches					
Crosswalk width is less than 6'					
Crosswalk striping condition					

Curb Ramp Issues	Curb Ramp ID ('z' or 'i' in ramp label indicates no existing ramp)				Possible Solutions
	1A	2A	3z	4A	
Curb ramp does not exist and is needed					Remove and replace curb ramp
Curb ramp does not land in crosswalk					
No 4' x 4' clear space at base of curb ramp					
Curbed side is not 90° or has traversable adjacent surface		X			
Flare cross slope is greater than 10%					
Curb ramp running slope is greater than 8.3%		X			
Blended transition running slope is greater than 5%					
Cut-thru ramp running slope is greater than 5%					
Curb ramp cross slope is greater than 2%				X	
Cut-thru ramp cross slope is greater than 2%					
Curb ramp width is less than 48"					
Cut-thru ramp width is less than 60"					
Permanent obstruction (>0.25") in curb ramp/landing/flares					For intersection, commercial driveway, and park ramps, install color truncated domes Install landing area Remove and replace landing area Fix curb ramp transition
Temporary obstruction (>0.25") in curb ramp/landing/flares					
No textured surface at base of curb ramp	X	X		X	
No color contrast at base of curb ramp	X	X		X	
Landing area does not exist and is needed	X	X		X	
Landing area is less than 5' x 5' or slopes greater than 2%	X	X		X	
Curb ramp transition onto roadway is greater than 0.25"		X		X	
Counter slope of the gutter or street at the foot of the curb ramp is greater than 5%					
Ponding occurs at base of curb ramp					



Ramp 1A



Ramp 2A



Corner 3 No Ramp (3z)



Ramp 4A

Opinion of Probable Construction Cost Disclaimer:

The Engineer has no control over the cost of labor, materials, equipment, or over the Contractor's methods of determining prices or over competitive bidding or market conditions. Opinions of probable costs provided herein are based on the information known to Engineer at this time and represent only the Engineer's judgment as a design professional familiar with the construction industry. The Engineer cannot and does not guarantee that proposals, bids, or actual construction costs will not vary from its opinions of probable costs.

Project Location Map Sources:

Esri, DeLorme, NAVTEQ, USGS, Intermap, iPC, NRCAN, Esri Japan, METI, Esri China (Hong Kong), Esri (Thailand), TomTom, 2013, DigitalGlobe, GeoEye, i-cubed, USDA, AEX, Getmapping, Aerogrip, IGN, IGP, swisstopo, and the GIS User Community

Client: City of Norman Date: 4/30/18
 Program: ADA Self-Evaluation and Transition Plan Prepared By: CMP
 KHA No.: 061298800 Checked By: EPE

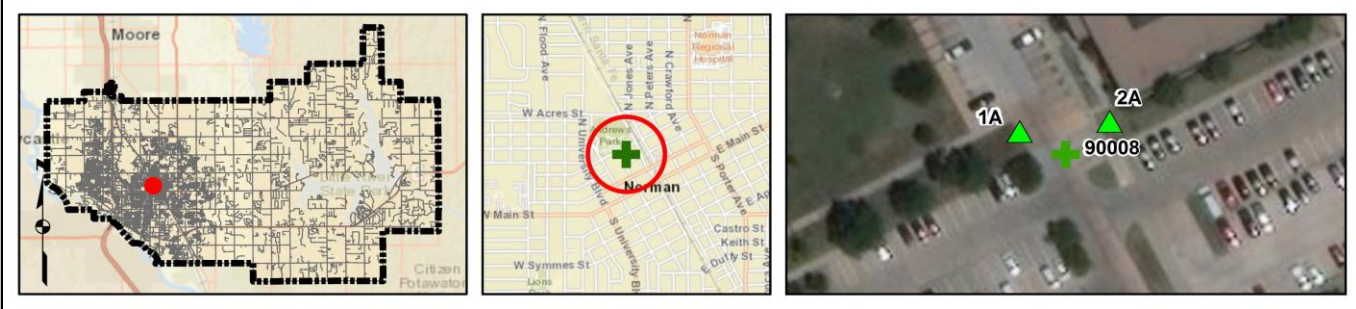
Corridor : Municipal Complex GPS ID: 90008
 Project Name: Intersection of Municipal Complex and parking lot (Lat.35.2226; Long.-97.4463)
 City: Norman

Item No.	Item Description	Quantity	Unit	Unit Price	Item Cost
ODOT 202(A)-0183	Unclassified Excavation	0	CY	\$ 5.50	\$ -
ODOT 609(A)-0300	Concrete Curb (6" Barrier-Integral)	0	LF	\$ 7.00	\$ -
ODOT 610(A)-0602	4" Concrete Sidewalk	15	SY	\$ 50.00	\$ 750.00
ODOT 610(I)-4610	Tactile Warning Device - New	20	SF	\$ 25.00	\$ 500.00
ODOT 610(I)-4615	Tactile Warning Device - Retrofit	0	SF	\$ 60.00	\$ -
ODOT 619(B)-4792	Removal of Sidewalk	15	SY	\$ 12.00	\$ 180.00
ODOT 857(F)-8006	Pavement Marking Removal (Traffic Stripe)	0	LF	\$ 0.25	\$ -
---	Crosswalk Pavement Markings	0	LF	\$ 6.00	\$ -
---	Repave Roadway	0	LS	\$ 5,000.00	\$ -
---	Fix Ponding	0	LS	\$ 2,000.00	\$ -
---	Fix Curb Ramp Transition	1	LS	\$ 2,000.00	\$ 2,000.00
---	Median Nose Modification	0	LS	\$ 5,000.00	\$ -
---	Remove Temporary Obstruction	0	LS	\$ 500.00	\$ -
---	Fix Curb Ramp Counter Slope	0	LS	\$ 2,000.00	\$ -

Basis for Cost Projection

<input checked="" type="checkbox"/> No Design Completed	Subtotal: \$	3,430.00
<input type="checkbox"/> Preliminary Design	Engineering: (% +/-)	15% \$ 672.86
<input type="checkbox"/> Final Design	Contingency: (% +/-)	20% \$ 897.14
	Estimated Project Cost: \$	5,000.00

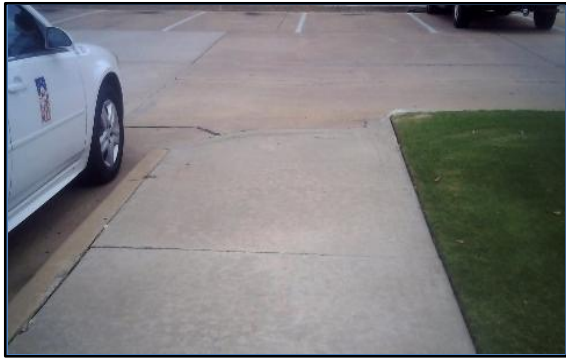
Project Location



Field Observations

Intersection Issues	Crosswalk				Possible Solutions
	N	E	S	W	
Path of travel pavement condition					All driveway path of travel issues and possible solutions provided in driveway shapefile (TRPEDDRV)
Path of travel running slope is greater than 5%					
Path of travel cross slope is greater than 2% for stop control approaches					
Path of travel cross slope is greater than 5% for free-flow approaches					
Crosswalk width is less than 6'					
Crosswalk striping condition					

Curb Ramp Issues	Curb Ramp ID ('z' or 'i' in ramp label indicates no existing ramp)		Possible Solutions
	1A	2A	
Curb ramp does not exist and is needed			Remove and replace curb ramp
Curb ramp does not land in crosswalk			
No 4' x 4' clear space at base of curb ramp			
Curbed side is not 90° or has traversable adjacent surface			
Flare cross slope is greater than 10%			
Curb ramp running slope is greater than 8.3%		X	
Blended transition running slope is greater than 5%			
Cut-thru ramp running slope is greater than 5%			
Curb ramp cross slope is greater than 2%	X		
Cut-thru ramp cross slope is greater than 2%			
Curb ramp width is less than 48"			For intersection, commercial driveway, and park ramps, install color truncated domes
Cut-thru ramp width is less than 60"			
Permanent obstruction (>0.25") in curb ramp/landing/flares			
Temporary obstruction (>0.25") in curb ramp/landing/flares			
No textured surface at base of curb ramp	X		
No color contrast at base of curb ramp	X		
Landing area does not exist and is needed			
Landing area is less than 5' x 5' or slopes greater than 2%			
Curb ramp transition onto roadway is greater than 0.25"	X		
Counter slope of the gutter or street at the foot of the curb ramp is greater than 5%			
Ponding occurs at base of curb ramp			



Ramp 1A



Ramp 2A

Opinion of Probable Construction Cost Disclaimer:

The Engineer has no control over the cost of labor, materials, equipment, or over the Contractor's methods of determining prices or over competitive bidding or market conditions. Opinions of probable costs provided herein are based on the information known to Engineer at this time and represent only the Engineer's judgment as a design professional familiar with the construction industry. The Engineer cannot and does not guarantee that proposals, bids, or actual construction costs will not vary from its opinions of probable costs.

Project Location Map Sources:

Esri, DeLorme, NAVTEQ, USGS, Intermap, iPC, NRCAN, Esri Japan, METI, Esri China (Hong Kong), Esri (Thailand), TomTom, 2013, DigitalGlobe, GeoEye, i-cubed, USDA, AEX, Getmapping, Aerogrip, IGN, IGP, swisstopo, and the GIS User Community

Client: City of Norman Date: 4/30/18
 Program: ADA Self-Evaluation and Transition Plan Prepared By: CMP
 KHA No.: 061298800 Checked By: EPE

Corridor : Municipal Complex GPS ID: 90009
 Project Name: Intersection of Municipal Complex and Daws St
 City: Norman

Item No.	Item Description	Quantity	Unit	Unit Price	Item Cost
ODOT 202(A)-0183	Unclassified Excavation	0	CY	\$ 5.50	\$ -
ODOT 609(A)-0300	Concrete Curb (6" Barrier-Integral)	0	LF	\$ 7.00	\$ -
ODOT 610(A)-0602	4" Concrete Sidewalk	8	SY	\$ 50.00	\$ 400.00
ODOT 610(I)-4610	Tactile Warning Device - New	10	SF	\$ 25.00	\$ 250.00
ODOT 610(I)-4615	Tactile Warning Device - Retrofit	0	SF	\$ 60.00	\$ -
ODOT 619(B)-4792	Removal of Sidewalk	8	SY	\$ 12.00	\$ 96.00
ODOT 857(F)-8006	Pavement Marking Removal (Traffic Stripe)	0	LF	\$ 0.25	\$ -
---	Crosswalk Pavement Markings	46	LF	\$ 6.00	\$ 276.00
---	Repave Roadway	1	LS	\$ 5,000.00	\$ 5,000.00
---	Fix Ponding	0	LS	\$ 2,000.00	\$ -
---	Fix Curb Ramp Transition	0	LS	\$ 2,000.00	\$ -
---	Median Nose Modification	0	LS	\$ 5,000.00	\$ -
---	Remove Temporary Obstruction	0	LS	\$ 500.00	\$ -
---	Fix Curb Ramp Counter Slope	0	LS	\$ 2,000.00	\$ -

Basis for Cost Projection

<input checked="" type="checkbox"/> No Design Completed	Subtotal:	\$ 6,022.00
<input type="checkbox"/> Preliminary Design	Engineering: (% +/-)	15% \$ 1,276.29
<input type="checkbox"/> Final Design	Contingency: (% +/-)	20% \$ 1,701.71
	Estimated Project Cost:	\$ 9,000.00

Project Location



Field Observations

Intersection Issues	Crosswalk				Possible Solutions
	N	E	S	W	
Path of travel pavement condition	N/A	N/A	N/A	Good	
Path of travel running slope is greater than 5%	N/A	N/A	N/A	X	Repave roadway and install crosswalk pavement markings
Path of travel cross slope is greater than 2% for stop control approaches	N/A	N/A	N/A	N/A	
Path of travel cross slope is greater than 5% for free-flow approaches	N/A	N/A	N/A		
Crosswalk width is less than 6'	N/A	N/A	N/A		
Crosswalk striping condition	N/A	N/A	N/A	Good	

Curb Ramp Issues	Curb Ramp ID ('z' or 'i' in ramp label indicates no existing ramp)				Possible Solutions
	1z	2z	3z	4A	
Curb ramp does not exist and is needed					
Curb ramp does not land in crosswalk					
No 4' x 4' clear space at base of curb ramp					
Curbed side is not 90° or has traversable adjacent surface					
Flare cross slope is greater than 10%				X	
Curb ramp running slope is greater than 8.3%					
Blended transition running slope is greater than 5%					
Cut-thru ramp running slope is greater than 5%					
Curb ramp cross slope is greater than 2%					Remove and replace curb ramp
Cut-thru ramp cross slope is greater than 2%					
Curb ramp width is less than 48"					
Cut-thru ramp width is less than 60"					
Permanent obstruction (>0.25") in curb ramp/landing/flares					
Temporary obstruction (>0.25") in curb ramp/landing/flares					
No textured surface at base of curb ramp					
No color contrast at base of curb ramp					
Landing area does not exist and is needed					
Landing area is less than 5' x 5' or slopes greater than 2%					
Curb ramp transition onto roadway is greater than 0.25"					
Counter slope of the gutter or street at the foot of the curb ramp is greater than 5%					
Ponding occurs at base of curb ramp					

Comment: Existing sidewalk, curb ramp, and/or striping configurations permit pedestrians to cross the major street. An Engineering study is needed to confirm crossing should be accommodated at this location and the current crossing treatment is appropriate.



Corner 1 No Ramp (1z)



Corner 2 No Ramp (2z)



Corner 3 No Ramp (3z)



Ramp 4A

Opinion of Probable Construction Cost Disclaimer:

The Engineer has no control over the cost of labor, materials, equipment, or over the Contractor's methods of determining prices or over competitive bidding or market conditions. Opinions of probable costs provided herein are based on the information known to Engineer at this time and represent only the Engineer's judgment as a design professional familiar with the construction industry. The Engineer cannot and does not guarantee that proposals, bids, or actual construction costs will not vary from its opinions of probable costs.

Project Location Map Sources:

Esri, DeLorme, NAVTEQ, USGS, Intermap, iPC, NRCAN, Esri Japan, METI, Esri China (Hong Kong), Esri (Thailand), TomTom, 2013, DigitalGlobe, GeoEye, i-cubed, USDA, AEX, Getmapping, Aerogrip, IGN, IGP, swisstopo, and the GIS User Community

Client: City of Norman Date: 4/30/18
 Program: ADA Self-Evaluation and Transition Plan Prepared By: CMP
 KHA No.: 061298800 Checked By: EPE

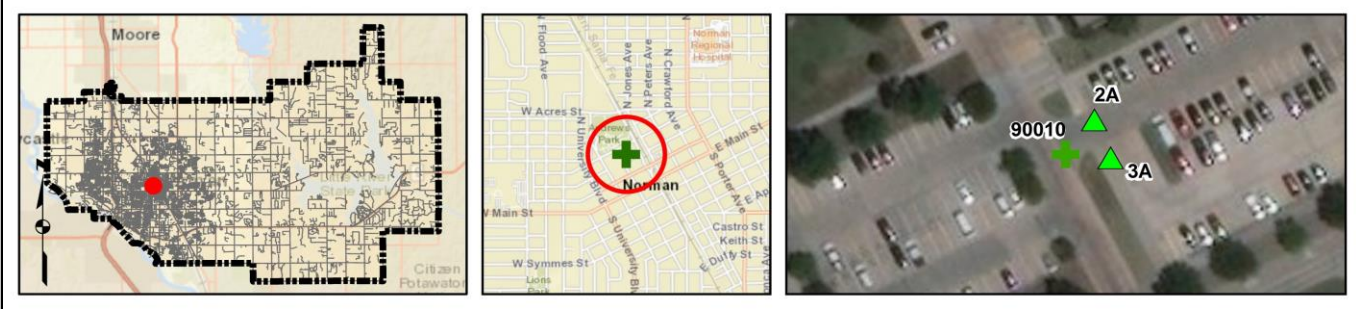
Corridor: Municipal Complex GPS ID: 90010
 Project Name: Intersection of Municipal Complex and parking lot (Lat.35.2225; Long.-97.4462)
 City: Norman

Item No.	Item Description	Quantity	Unit	Unit Price	Item Cost
ODOT 202(A)-0183	Unclassified Excavation	0	CY	\$ 5.50	\$ -
ODOT 609(A)-0300	Concrete Curb (6" Barrier-Integral)	0	LF	\$ 7.00	\$ -
ODOT 610(A)-0602	4" Concrete Sidewalk	15	SY	\$ 50.00	\$ 750.00
ODOT 610(I)-4610	Tactile Warning Device - New	20	SF	\$ 25.00	\$ 500.00
ODOT 610(I)-4615	Tactile Warning Device - Retrofit	0	SF	\$ 60.00	\$ -
ODOT 619(B)-4792	Removal of Sidewalk	15	SY	\$ 12.00	\$ 180.00
ODOT 857(F)-8006	Pavement Marking Removal (Traffic Stripe)	0	LF	\$ 0.25	\$ -
---	Crosswalk Pavement Markings	0	LF	\$ 6.00	\$ -
---	Repave Roadway	0	LS	\$ 5,000.00	\$ -
---	Fix Ponding	0	LS	\$ 2,000.00	\$ -
---	Fix Curb Ramp Transition	1	LS	\$ 2,000.00	\$ 2,000.00
---	Median Nose Modification	0	LS	\$ 5,000.00	\$ -
---	Remove Temporary Obstruction	0	LS	\$ 500.00	\$ -
---	Fix Curb Ramp Counter Slope	0	LS	\$ 2,000.00	\$ -

Basis for Cost Projection

<input checked="" type="checkbox"/> No Design Completed	Subtotal:	\$	3,430.00
<input type="checkbox"/> Preliminary Design	Engineering: (% +/-)	15%	\$ 672.86
<input type="checkbox"/> Final Design	Contingency: (% +/-)	20%	\$ 897.14
	Estimated Project Cost:	\$	5,000.00

Project Location



Field Observations

Intersection Issues	Crosswalk				Possible Solutions
	N	E	S	W	
Path of travel pavement condition					All driveway path of travel issues and possible solutions provided in driveway shapefile (TRPEDDRV)
Path of travel running slope is greater than 5%					
Path of travel cross slope is greater than 2% for stop control approaches					
Path of travel cross slope is greater than 5% for free-flow approaches					
Crosswalk width is less than 6'					
Crosswalk striping condition					

Curb Ramp Issues	Curb Ramp ID ('z' or 'i' in ramp label indicates no existing ramp)		Possible Solutions
	2A	3A	
Curb ramp does not exist and is needed			Remove and replace curb ramp
Curb ramp does not land in crosswalk			
No 4' x 4' clear space at base of curb ramp			
Curbed side is not 90° or has traversable adjacent surface	X	X	
Flare cross slope is greater than 10%			
Curb ramp running slope is greater than 8.3%		X	
Blended transition running slope is greater than 5%			
Cut-thru ramp running slope is greater than 5%			
Curb ramp cross slope is greater than 2%			
Cut-thru ramp cross slope is greater than 2%			
Curb ramp width is less than 48"			For intersection, commercial driveway, and park ramps, install color truncated domes
Cut-thru ramp width is less than 60"			
Permanent obstruction (>0.25") in curb ramp/landing/flares			
Temporary obstruction (>0.25") in curb ramp/landing/flares			
No textured surface at base of curb ramp		X	
No color contrast at base of curb ramp		X	
Landing area does not exist and is needed			
Landing area is less than 5' x 5' or slopes greater than 2%			
Curb ramp transition onto roadway is greater than 0.25"	X		
Counter slope of the gutter or street at the foot of the curb ramp is greater than 5%			
Ponding occurs at base of curb ramp			Fix curb ramp transition



Ramp 2A



Ramp 3A

Opinion of Probable Construction Cost Disclaimer:

The Engineer has no control over the cost of labor, materials, equipment, or over the Contractor's methods of determining prices or over competitive bidding or market conditions. Opinions of probable costs provided herein are based on the information known to Engineer at this time and represent only the Engineer's judgment as a design professional familiar with the construction industry. The Engineer cannot and does not guarantee that proposals, bids, or actual construction costs will not vary from its opinions of probable costs.

Project Location Map Sources:

Esri, DeLorme, NAVTEQ, USGS, Intermap, iPC, NRCAN, Esri Japan, METI, Esri China (Hong Kong), Esri (Thailand), TomTom, 2013, DigitalGlobe, GeoEye, i-cubed, USDA, AEX, Getmapping, Aerogrip, IGN, IGP, swisstopo, and the GIS User Community

Client: City of Norman Date: 4/30/18
 Program: ADA Self-Evaluation and Transition Plan Prepared By: CMP
 KHA No.: 061298800 Checked By: EPE

Corridor: Municipal Complex GPS ID: 90011
 Project Name: Intersection of Municipal Complex and James Garner Ave
 City: Norman

Item No.	Item Description	Quantity	Unit	Unit Price	Item Cost
ODOT 202(A)-0183	Unclassified Excavation	0	CY	\$ 5.50	\$ -
ODOT 609(A)-0300	Concrete Curb (6" Barrier-Integral)	0	LF	\$ 7.00	\$ -
ODOT 610(A)-0602	4" Concrete Sidewalk	8	SY	\$ 50.00	\$ 400.00
ODOT 610(I)-4610	Tactile Warning Device - New	10	SF	\$ 25.00	\$ 250.00
ODOT 610(I)-4615	Tactile Warning Device - Retrofit	0	SF	\$ 60.00	\$ -
ODOT 619(B)-4792	Removal of Sidewalk	8	SY	\$ 12.00	\$ 96.00
ODOT 857(F)-8006	Pavement Marking Removal (Traffic Stripe)	0	LF	\$ 0.25	\$ -
---	Crosswalk Pavement Markings	58	LF	\$ 6.00	\$ 348.00
---	Repave Roadway	0	LS	\$ 5,000.00	\$ -
---	Fix Ponding	0	LS	\$ 2,000.00	\$ -
---	Fix Curb Ramp Transition	0	LS	\$ 2,000.00	\$ -
---	Median Nose Modification	0	LS	\$ 5,000.00	\$ -
---	Remove Temporary Obstruction	0	LS	\$ 500.00	\$ -
---	Fix Curb Ramp Counter Slope	0	LS	\$ 2,000.00	\$ -

Basis for Cost Projection

<input checked="" type="checkbox"/> No Design Completed	Subtotal:	\$ 1,094.00
<input type="checkbox"/> Preliminary Design	Engineering: (% +/-)	15% \$ 388.29
<input type="checkbox"/> Final Design	Contingency: (% +/-)	20% \$ 517.71
	Estimated Project Cost:	\$ 2,000.00

Project Location



Field Observations

Intersection Issues	Crosswalk				Possible Solutions
	N	E	S	W	
Path of travel pavement condition	Good	N/A	N/A	N/A	
Path of travel running slope is greater than 5%		N/A	N/A	N/A	
Path of travel cross slope is greater than 2% for stop control approaches		N/A	N/A	N/A	
Path of travel cross slope is greater than 5% for free-flow approaches	N/A	N/A	N/A	N/A	
Crosswalk width is less than 6'	N/A	N/A	N/A	N/A	Install crosswalk pavement markings
Crosswalk striping condition	None	N/A	N/A	N/A	

Curb Ramp Issues	Curb Ramp ID ('z' or 'i' in ramp label indicates no existing ramp)				Possible Solutions
	1A	2z	3z	4z	
Curb ramp does not exist and is needed					Remove and replace curb ramp
Curb ramp does not land in crosswalk					
No 4' x 4' clear space at base of curb ramp					
Curbed side is not 90° or has traversable adjacent surface					
Flare cross slope is greater than 10%					
Curb ramp running slope is greater than 8.3%					
Blended transition running slope is greater than 5%					
Cut-thru ramp running slope is greater than 5%					
Curb ramp cross slope is greater than 2%					
Cut-thru ramp cross slope is greater than 2%					
Curb ramp width is less than 48"					For intersection, commercial driveway, and park ramps, install color truncated domes
Cut-thru ramp width is less than 60"					
Permanent obstruction (>0.25") in curb ramp/landing/flares	X				
Temporary obstruction (>0.25") in curb ramp/landing/flares					
No textured surface at base of curb ramp	X				
No color contrast at base of curb ramp	X				
Landing area does not exist and is needed					
Landing area is less than 5' x 5' or slopes greater than 2%					
Curb ramp transition onto roadway is greater than 0.25"					
Counter slope of the gutter or street at the foot of the curb ramp is greater than 5%					
Ponding occurs at base of curb ramp					



Ramp 1A



Corner 2 No Ramp (2z)



Corner 3 No Ramp (3z)



Corner 4 No Ramp (4z)

Opinion of Probable Construction Cost Disclaimer:

The Engineer has no control over the cost of labor, materials, equipment, or over the Contractor's methods of determining prices or over competitive bidding or market conditions. Opinions of probable costs provided herein are based on the information known to Engineer at this time and represent only the Engineer's judgment as a design professional familiar with the construction industry. The Engineer cannot and does not guarantee that proposals, bids, or actual construction costs will not vary from its opinions of probable costs.

Project Location Map Sources:

Esri, DeLorme, NAVTEQ, USGS, Intermap, iPC, NRCAN, Esri Japan, METI, Esri China (Hong Kong), Esri (Thailand), TomTom, 2013, DigitalGlobe, GeoEye, i-cubed, USDA, AEX, Getmapping, Aerogrip, IGN, IGP, swisstopo, and the GIS User Community

Client: City of Norman Date: 4/30/18
 Program: ADA Self-Evaluation and Transition Plan Prepared By: CMP
 KHA No.: 061298800 Checked By: EPE

Corridor : Municipal Complex GPS ID: 90012
 Project Name: Intersection of Municipal Complex and Tonhawa St
 City: Norman

Item No.	Item Description	Quantity	Unit	Unit Price	Item Cost
ODOT 202(A)-0183	Unclassified Excavation	0	CY	\$ 5.50	\$ -
ODOT 609(A)-0300	Concrete Curb (6" Barrier-Integral)	0	LF	\$ 7.00	\$ -
ODOT 610(A)-0602	14" Concrete Sidewalk	15	SY	\$ 50.00	\$ 750.00
ODOT 610(I)-4610	Tactile Warning Device - New	20	SF	\$ 25.00	\$ 500.00
ODOT 610(I)-4615	Tactile Warning Device - Retrofit	0	SF	\$ 60.00	\$ -
ODOT 619(B)-4792	Removal of Sidewalk	20	SY	\$ 12.00	\$ 240.00
ODOT 857(F)-8006	Pavement Marking Removal (Traffic Stripe)	0	LF	\$ 0.25	\$ -
---	Crosswalk Pavement Markings	0	LF	\$ 6.00	\$ -
---	Repave Roadway	0	LS	\$ 5,000.00	\$ -
---	Fix Ponding	0	LS	\$ 2,000.00	\$ -
---	Fix Curb Ramp Transition	1	LS	\$ 2,000.00	\$ 2,000.00
---	Median Nose Modification	0	LS	\$ 5,000.00	\$ -
---	Remove Temporary Obstruction	0	LS	\$ 500.00	\$ -
---	Fix Curb Ramp Counter Slope	0	LS	\$ 2,000.00	\$ -

Basis for Cost Projection

<input checked="" type="checkbox"/> No Design Completed	Subtotal:	\$	3,490.00
<input type="checkbox"/> Preliminary Design	Engineering: (% +/-)	15%	\$ 647.14
<input type="checkbox"/> Final Design	Contingency: (% +/-)	20%	\$ 862.86
	Estimated Project Cost:	\$	5,000.00

Project Location



Field Observations

Intersection Issues	Crosswalk				Possible Solutions
	N	E	S	W	
Path of travel pavement condition					All driveway path of travel issues and possible solutions provided in driveway shapefile (TRPEDDRV)
Path of travel running slope is greater than 5%					
Path of travel cross slope is greater than 2% for stop control approaches					
Path of travel cross slope is greater than 5% for free-flow approaches					
Crosswalk width is less than 6'					
Crosswalk striping condition					

Curb Ramp Issues	Curb Ramp ID ('z' or 'i' in ramp label indicates no existing ramp)		Possible Solutions
	1A	2A	
Curb ramp does not exist and is needed			Remove and replace curb ramp
Curb ramp does not land in crosswalk			
No 4' x 4' clear space at base of curb ramp			
Curbed side is not 90° or has traversable adjacent surface			
Flare cross slope is greater than 10%			
Curb ramp running slope is greater than 8.3%			
Blended transition running slope is greater than 5%			
Cut-thru ramp running slope is greater than 5%			
Curb ramp cross slope is greater than 2%	X	X	
Cut-thru ramp cross slope is greater than 2%			
Curb ramp width is less than 48"			For intersection, commercial driveway, and park ramps, install color truncated domes
Cut-thru ramp width is less than 60"			
Permanent obstruction (>0.25") in curb ramp/landing/flares			
Temporary obstruction (>0.25") in curb ramp/landing/flares			
No textured surface at base of curb ramp	X	X	
No color contrast at base of curb ramp	X	X	
Landing area does not exist and is needed			
Landing area is less than 5' x 5' or slopes greater than 2%	X		
Curb ramp transition onto roadway is greater than 0.25"	X		
Counter slope of the gutter or street at the foot of the curb ramp is greater than 5%			
Ponding occurs at base of curb ramp			



Ramp 1A



Ramp 2A

Opinion of Probable Construction Cost Disclaimer:

The Engineer has no control over the cost of labor, materials, equipment, or over the Contractor's methods of determining prices or over competitive bidding or market conditions. Opinions of probable costs provided herein are based on the information known to Engineer at this time and represent only the Engineer's judgment as a design professional familiar with the construction industry. The Engineer cannot and does not guarantee that proposals, bids, or actual construction costs will not vary from its opinions of probable costs.

Project Location Map Sources:

Esri, DeLorme, NAVTEQ, USGS, Intermap, iPC, NRCAN, Esri Japan, METI, Esri China (Hong Kong), Esri (Thailand), TomTom, 2013, DigitalGlobe, GeoEye, i-cubed, USDA, AEX, Getmapping, Aerogrip, IGN, IGP, swisstopo, and the GIS User Community

Client: City of Norman Date: 4/30/18
 Program: ADA Self-Evaluation and Transition Plan Prepared By: CMP
 KHA No.: 061298800 Checked By: EPE

Corridor : Municipal Complex GPS ID: 90013
 Project Name: Intersection of Municipal Complex and parking lot (Lat.35.2223; Long.-97.4459)
 City: Norman

Item No.	Item Description	Quantity	Unit	Unit Price	Item Cost
ODOT 202(A)-0183	Unclassified Excavation	0	CY	\$ 5.50	\$ -
ODOT 609(A)-0300	Concrete Curb (6" Barrier-Integral)	0	LF	\$ 7.00	\$ -
ODOT 610(A)-0602	4" Concrete Sidewalk	0	SY	\$ 50.00	\$ -
ODOT 610(I)-4610	Tactile Warning Device - New	0	SF	\$ 25.00	\$ -
ODOT 610(I)-4615	Tactile Warning Device - Retrofit	10	SF	\$ 60.00	\$ 600.00
ODOT 619(B)-4792	Removal of Sidewalk	0	SY	\$ 12.00	\$ -
ODOT 857(F)-8006	Pavement Marking Removal (Traffic Stripe)	0	LF	\$ 0.25	\$ -
---	Crosswalk Pavement Markings	0	LF	\$ 6.00	\$ -
---	Repave Roadway	0	LS	\$ 5,000.00	\$ -
---	Fix Ponding	0	LS	\$ 2,000.00	\$ -
---	Fix Curb Ramp Transition	0	LS	\$ 2,000.00	\$ -
---	Median Nose Modification	0	LS	\$ 5,000.00	\$ -
---	Remove Temporary Obstruction	0	LS	\$ 500.00	\$ -
---	Fix Curb Ramp Counter Slope	0	LS	\$ 2,000.00	\$ -

Basis for Cost Projection

<input checked="" type="checkbox"/> No Design Completed	Subtotal:	\$ 600.00
<input type="checkbox"/> Preliminary Design	Engineering: (% +/-)	15% \$ 171.43
<input type="checkbox"/> Final Design	Contingency: (% +/-)	20% \$ 228.57
	Estimated Project Cost:	\$ 1,000.00

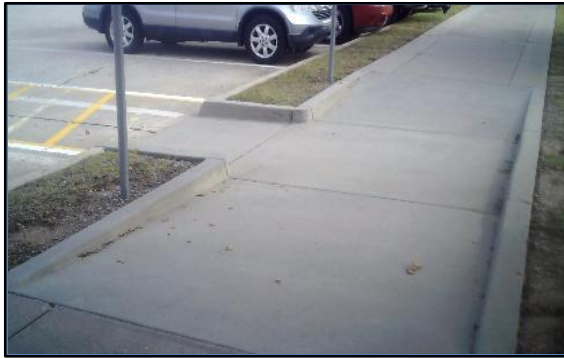
Project Location



Field Observations

Intersection Issues	Crosswalk				Possible Solutions
	N	E	S	W	
Path of travel pavement condition					All driveway path of travel issues and possible solutions provided in driveway shapefile (TRPEDDRV)
Path of travel running slope is greater than 5%					
Path of travel cross slope is greater than 2% for stop control approaches					
Path of travel cross slope is greater than 5% for free-flow approaches					
Crosswalk width is less than 6'					
Crosswalk striping condition					

Curb Ramp Issues	Curb Ramp ID ('z' or 'i' in ramp label indicates no existing ramp)		Possible Solutions
	4A		
Curb ramp does not exist and is needed			For intersection, commercial driveway, and park ramps, install color truncated domes
Curb ramp does not land in crosswalk			
No 4' x 4' clear space at base of curb ramp			
Curbed side is not 90° or has traversable adjacent surface			
Flare cross slope is greater than 10%			
Curb ramp running slope is greater than 8.3%			
Blended transition running slope is greater than 5%			
Cut-thru ramp running slope is greater than 5%			
Curb ramp cross slope is greater than 2%			
Cut-thru ramp cross slope is greater than 2%			
Curb ramp width is less than 48"			
Cut-thru ramp width is less than 60"			
Permanent obstruction (>0.25") in curb ramp/landing/flares			
Temporary obstruction (>0.25") in curb ramp/landing/flares			
No textured surface at base of curb ramp	X		
No color contrast at base of curb ramp	X		
Landing area does not exist and is needed			
Landing area is less than 5' x 5' or slopes greater than 2%			
Curb ramp transition onto roadway is greater than 0.25"			
Counter slope of the gutter or street at the foot of the curb ramp is greater than 5%			
Ponding occurs at base of curb ramp			



Ramp 4A

Opinion of Probable Construction Cost Disclaimer:

The Engineer has no control over the cost of labor, materials, equipment, or over the Contractor's methods of determining prices or over competitive bidding or market conditions. Opinions of probable costs provided herein are based on the information known to Engineer at this time and represent only the Engineer's judgment as a design professional familiar with the construction industry. The Engineer cannot and does not guarantee that proposals, bids, or actual construction costs will not vary from its opinions of probable costs.

Project Location Map Sources:

Esri, DeLorme, NAVTEQ, USGS, Intermap, iPC, NRCAN, Esri Japan, METI, Esri China (Hong Kong), Esri (Thailand), TomTom, 2013, DigitalGlobe, GeoEye, i-cubed, USDA, AEX, Getmapping, Aerogrip, IGN, IGP, swisstopo, and the GIS User Community

Client: City of Norman Date: 4/30/18
 Program: ADA Self-Evaluation and Transition Plan Prepared By: CMP
 KHA No.: 061298800 Checked By: EPE

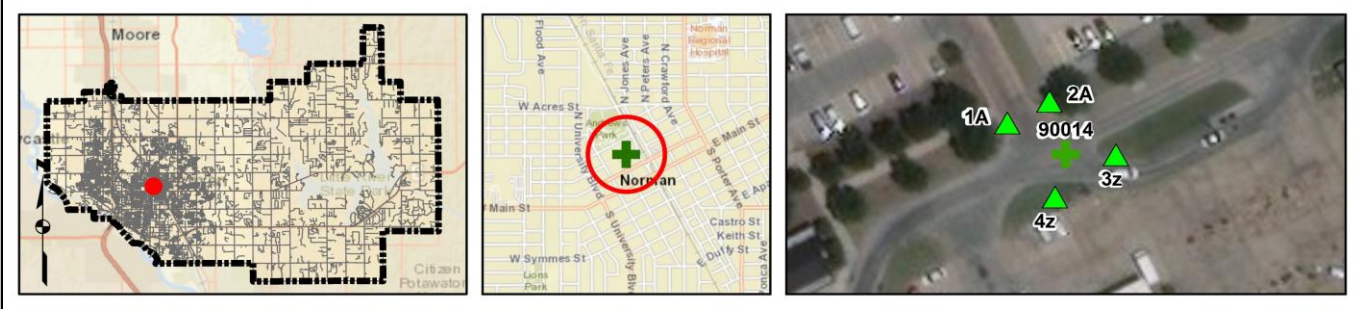
Corridor : Municipal Complex GPS ID: 90014
 Project Name: Intersection of Municipal Complex and N Santa Fe Ave
 City: Norman

Item No.	Item Description	Quantity	Unit	Unit Price	Item Cost
ODOT 202(A)-0183	Unclassified Excavation	0	CY	\$ 5.50	\$ -
ODOT 609(A)-0300	Concrete Curb (6" Barrier-Integral)	0	LF	\$ 7.00	\$ -
ODOT 610(A)-0602	4" Concrete Sidewalk	15	SY	\$ 50.00	\$ 750.00
ODOT 610(I)-4610	Tactile Warning Device - New	20	SF	\$ 25.00	\$ 500.00
ODOT 610(I)-4615	Tactile Warning Device - Retrofit	0	SF	\$ 60.00	\$ -
ODOT 619(B)-4792	Removal of Sidewalk	20	SY	\$ 12.00	\$ 240.00
ODOT 857(F)-8006	Pavement Marking Removal (Traffic Stripe)	0	LF	\$ 0.25	\$ -
---	Crosswalk Pavement Markings	40	LF	\$ 6.00	\$ 240.00
---	Repave Roadway	1	LS	\$ 5,000.00	\$ 5,000.00
---	Fix Ponding	0	LS	\$ 2,000.00	\$ -
---	Fix Curb Ramp Transition	2	LS	\$ 2,000.00	\$ 4,000.00
---	Median Nose Modification	0	LS	\$ 5,000.00	\$ -
---	Remove Temporary Obstruction	0	LS	\$ 500.00	\$ -
---	Fix Curb Ramp Counter Slope	0	LS	\$ 2,000.00	\$ -

Basis for Cost Projection

<input checked="" type="checkbox"/> No Design Completed	Subtotal:	\$ 10,730.00
<input type="checkbox"/> Preliminary Design	Engineering: (% +/-)	15% \$ 1,830.00
<input type="checkbox"/> Final Design	Contingency: (% +/-)	20% \$ 2,440.00
	Estimated Project Cost:	\$ 15,000.00

Project Location



Field Observations

Intersection Issues	Crosswalk				Possible Solutions
	N	E	S	W	
Path of travel pavement condition	Poor	N/A	N/A	N/A	Repave roadway and install crosswalk pavement markings
Path of travel running slope is greater than 5%		N/A	N/A	N/A	
Path of travel cross slope is greater than 2% for stop control approaches	X	N/A	N/A	N/A	
Path of travel cross slope is greater than 5% for free-flow approaches	N/A	N/A	N/A	N/A	Install crosswalk pavement markings
Crosswalk width is less than 6'	N/A	N/A	N/A	N/A	
Crosswalk striping condition	None	N/A	N/A	N/A	

Curb Ramp Issues	Curb Ramp ID ('z' or 'i' in ramp label indicates no existing ramp)				Possible Solutions
	1A	2A	3z	4z	
Curb ramp does not exist and is needed					Remove and replace curb ramp
Curb ramp does not land in crosswalk					
No 4' x 4' clear space at base of curb ramp					
Curbed side is not 90° or has traversable adjacent surface					
Flare cross slope is greater than 10%					
Curb ramp running slope is greater than 8.3%		X			
Blended transition running slope is greater than 5%					
Cut-thru ramp running slope is greater than 5%					
Curb ramp cross slope is greater than 2%	X	X			
Cut-thru ramp cross slope is greater than 2%					
Curb ramp width is less than 48"					For intersection, commercial driveway, and park ramps, install color truncated domes
Cut-thru ramp width is less than 60"					
Permanent obstruction (>0.25") in curb ramp/landing/flares					
Temporary obstruction (>0.25") in curb ramp/landing/flares					
No textured surface at base of curb ramp	X	X			
No color contrast at base of curb ramp	X	X			
Landing area does not exist and is needed					
Landing area is less than 5' x 5' or slopes greater than 2%	X				
Curb ramp transition onto roadway is greater than 0.25"	X	X			
Counter slope of the gutter or street at the foot of the curb ramp is greater than 5%					
Ponding occurs at base of curb ramp					Remove and replace landing area Fix curb ramp transition



Ramp 1A



Ramp 2A



Corner 3 No Ramp (3z)



Corner 4 No Ramp (4z)

Opinion of Probable Construction Cost Disclaimer:

The Engineer has no control over the cost of labor, materials, equipment, or over the Contractor's methods of determining prices or over competitive bidding or market conditions. Opinions of probable costs provided herein are based on the information known to Engineer at this time and represent only the Engineer's judgment as a design professional familiar with the construction industry. The Engineer cannot and does not guarantee that proposals, bids, or actual construction costs will not vary from its opinions of probable costs.

Project Location Map Sources:

Esri, DeLorme, NAVTEQ, USGS, Intermap, iPC, NRCAN, Esri Japan, METI, Esri China (Hong Kong), Esri (Thailand), TomTom, 2013, DigitalGlobe, GeoEye, i-cubed, USDA, AEX, Getmapping, Aerogrip, IGN, IGP, swisstopo, and the GIS User Community