

Norman Comprehensive Transportation Plan

TRANSPORTATION CONCEPTS

Sub-Committee Meeting
April 25, 2013

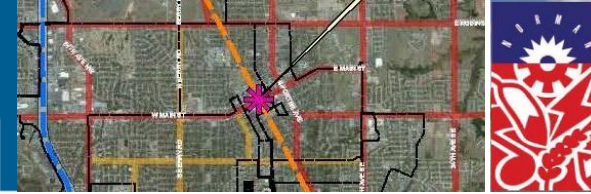
Agenda



6:00-6:15	Review Transportation Needs/Group Assignment
6:15-6:20	5 Minute Break
6:20-7:20	Mixed Modal Work Session
7:20-7:25	5 Minute Break
7:25-7:55	Work Group Summaries
7:55-8:00	Next Steps and Wrap-Up

Meeting Goal: Refinement of transportation concepts and Subcommittee input of concept planning prioritization.

Public Input



- Public Input Meeting – April 15th
 - Small turnout; Presentation, modal stations, summary of input
 - Public Input:
 - Transit Station
 - Bus service to Section 8 Housing (list), MNTC, circulator spine routes, loops, destinations w/o transfers, bus shelters
 - Commuter rail
 - Bike loop - Brooks, 24th, Robinson, Porter
 - Voice activated crossing
 - Main Street as 2-way
 - Auto/Parking
 - 72nd E connection, aesthetic improvements
 - RR grade separation @ Lindsey
 - Parking needs – Campus Corner
 - Bike/Pedestrian
 - Bike lanes on side streets
 - Scenic pathways

TRANSIT STATION COMMENTS

BUS CIRCULATION SERVICE TO ALL SECTION 8 HOUSING

BUS SERVICE TO MUTC

CONSIDER LINEAR FIXED ROUTE (ROBINSON STREET)

Grid system bus routes would reduce travel time

TRANSIT NEEDS PLAN (PED) DESTINATIONS ON CAMPUS CORNER !!

SHELTER AT ALL STOPS. IT'S HOT. IT'S OLD. SHELTER !!

MORE THAN 3 BENCHES PER BUS - IT'S A CRASHHOT ID THE BUS WILL HAVE ROOM FOR YOU AND YOUR KID !!

NEED BENCHES TO GO BOTH WAYS - NOT JUST ONE WAY - IT TAKES ABOUT 1 HR TO GO FROM LIBRARY TO MALL



• Parking needs in Campus Corner

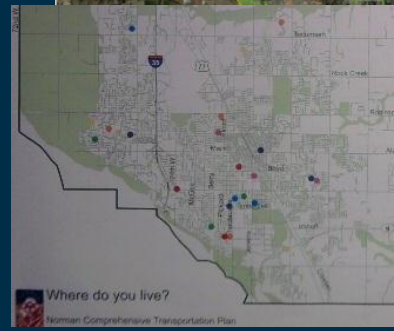
• Aesthetic Improvements needed along Main Street and Lindsey Street - These are gateways into Norman

• 72nd Street Connection needed

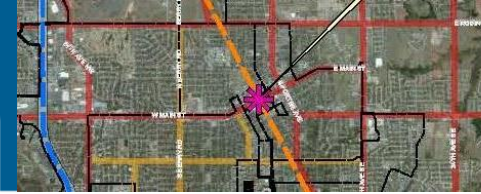
• Multi-Use Path needed around Airpore

• Lindsey Street Grade Separation over the Railroad.

• Parking Garage - ~~needed~~
↳ Use funding from garage to implement other transportation improvements (NON-CARSPACE)



Public Input



- OU Student Input Meeting – April 25th
 - Rawls Engineering Building
 - Overview presentation, modal stations, student input
 - Summary of Input

Hey, OU Students!
What do you think about Transportation in Norman?

Come let the City of Norman know your ideas about their first Comprehensive Transportation Plan.

This plan will define how transportation issues (roads, public transportation, bicycles, walking) are developed in Norman over the next two decades.

Thursday, 1:00 – 3:00 pm, April 25
Rawls Engineering Practice Facility, Room 200

A Public Open House for OU students, faculty and staff is being held to provide information regarding the progress, and to receive input, on the development of Norman's first Comprehensive Transportation Plan. The Comprehensive Transportation Plan will help guide the City's growth and development across all modes of transportation for the next twenty years.

The City of Norman has hired a team of transportation experts led by Freese and Nichols of Dallas, Texas to develop the plan. Other members of the Freese and Nichols team include Garner, LLC of Norman and Alliance Transportation Group of Dallas, Texas. As part of their service, the Freese and Nichols team will host this open house along with Norman city staff to provide OU students, faculty and staff an opportunity to ask questions and make recommendations and comments regarding the plan's development.

For accommodations on the basis of disability, or if you have additional questions, please contact casos@ou.edu. The University of Oklahoma is an equal opportunity institution. www.ou.edu/foa

Cosponsored by

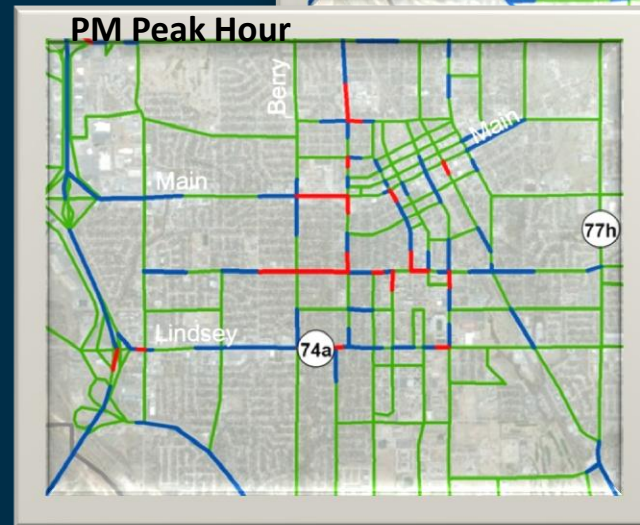
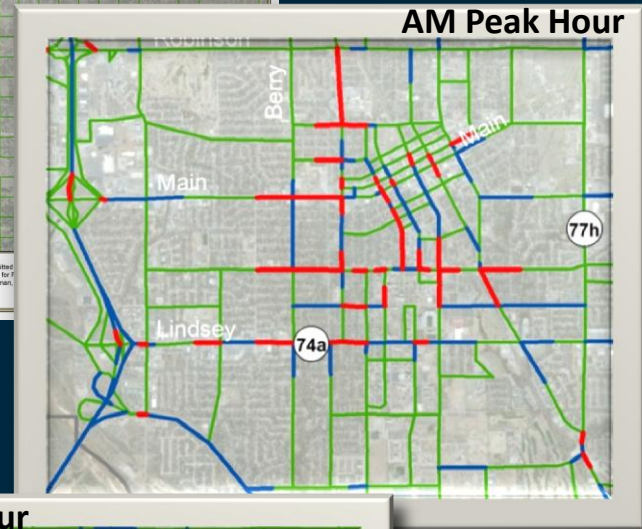
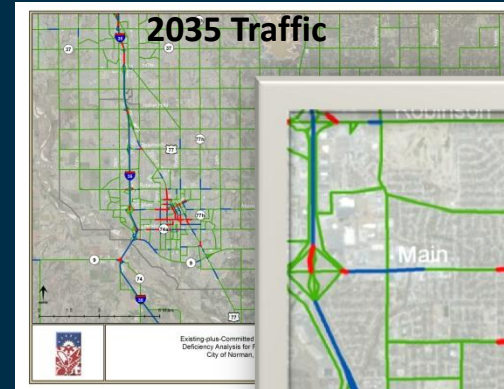
essa
ENVIRONMENTAL SCIENCE
STUDENT ASSOCIATION

**FREESSE
NICHOLS**

Roadway Needs

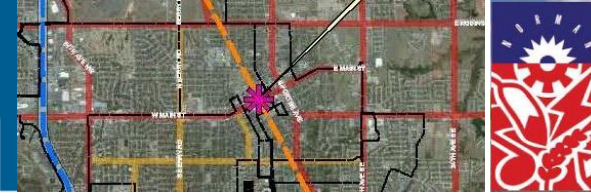


- North/South Capacity to downtown and areas to south
- Improvements for East/West capacity
- Connectivity between downtown and campus corner
- Parking:
 - Garage
 - Metering
 - Bus



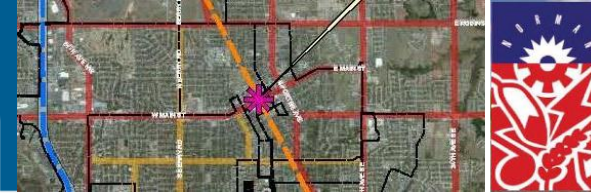
**Modeling:
Existing +
Committed
Analysis**

Transit Needs



- Bus:
 - Enhance current service operations
 - System reconfiguration/expansion
- Commuter Rail:
 - Potential station locations
 - Funding
 - Land Use considerations
 - Regional Transportation Authority

Airport, Freight and Emergency Response Needs



- Protect zoning around airport and industrial districts to serve freight, rail and air transportation needs
- Additional lane capacity for special events
- Additional grade separated crossing with RR
- Corridor enhancements
- Land use coordination

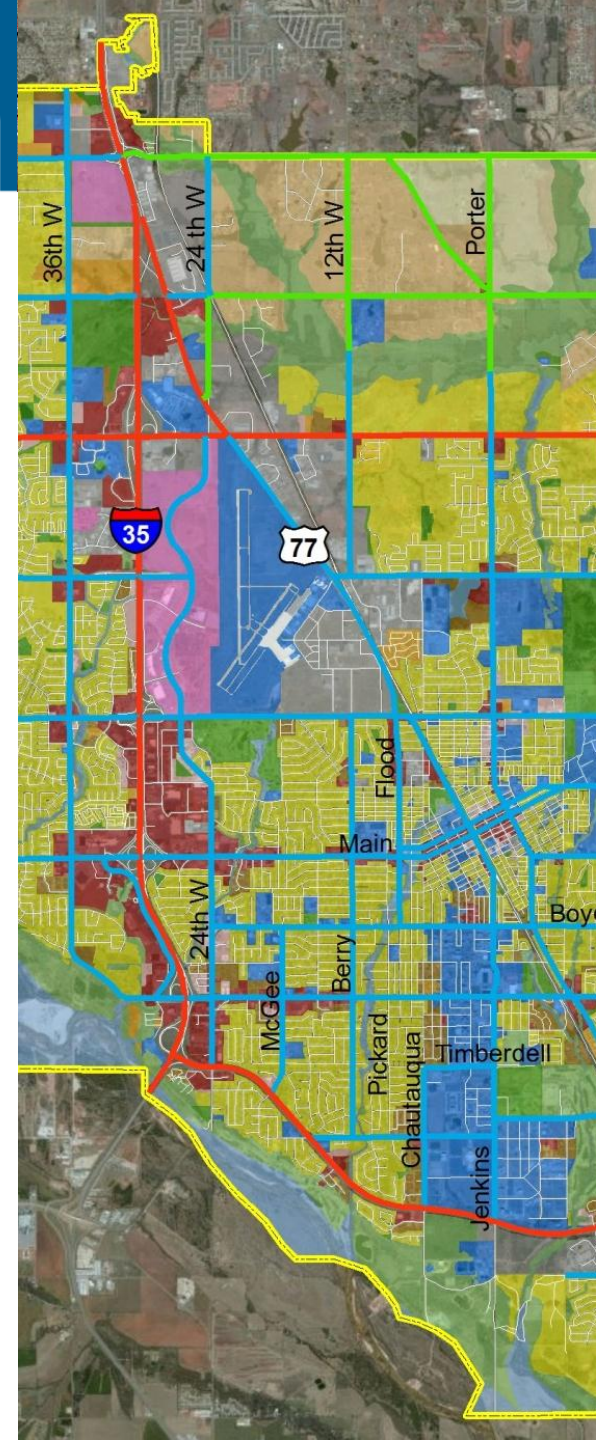
Bike/Pedestrian Needs



- Sidewalk system and gap improvements
- Pedestrian safety/mobility during construction
- Way-finding toward completed sidewalks
- Implementation/prioritization of:
 - Safe Routes to Schools
 - Safe Routes to Transit
 - Access from neighborhoods to parks
- Promote Bike & Walking
- Funding

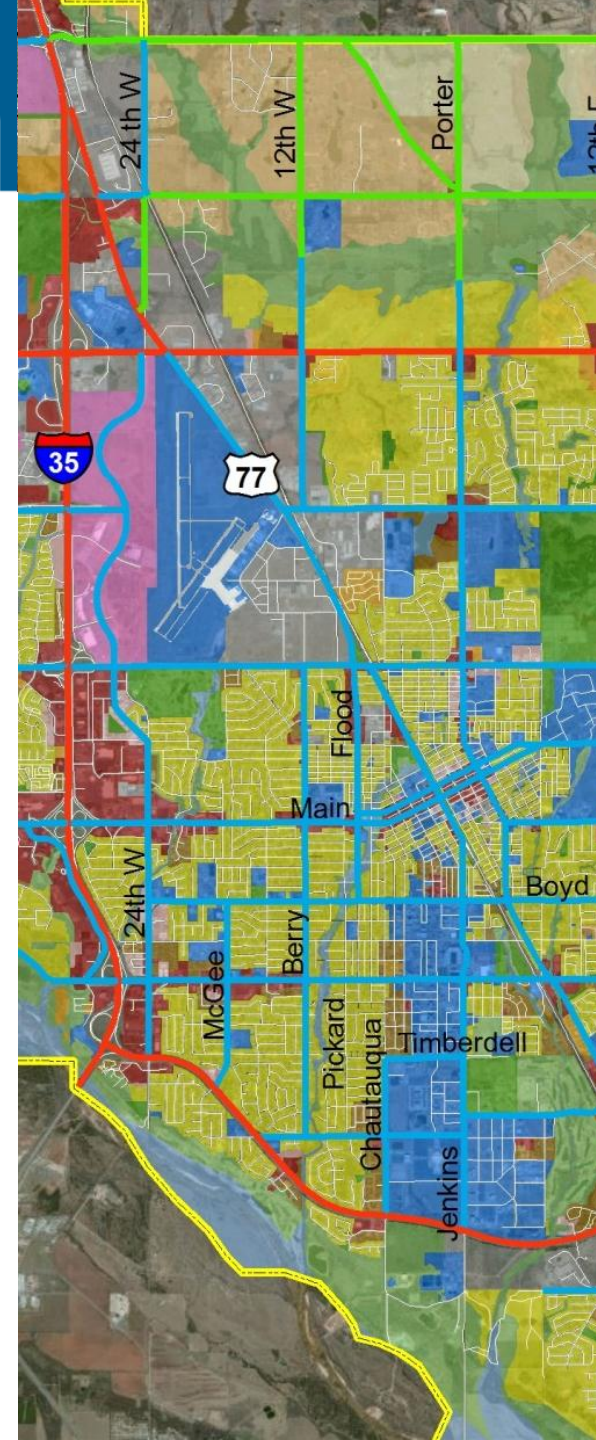
Breakout Session (6:20-7:20)

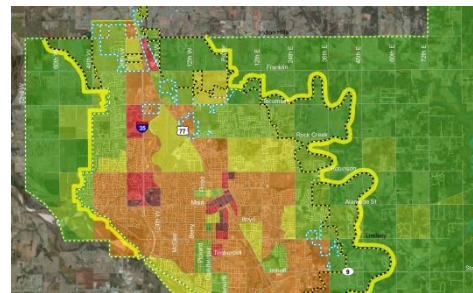
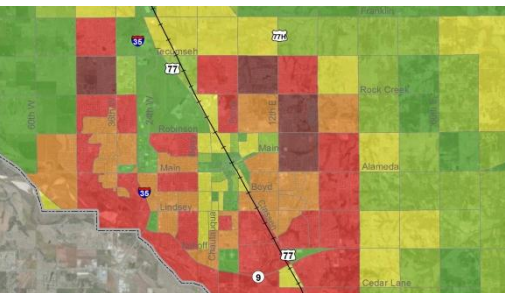
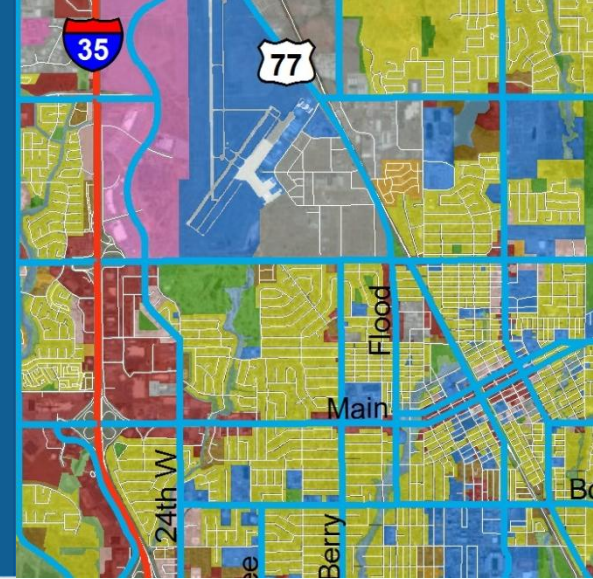
- Mixed Mode Groups
- Discuss Concept Plans
- Comment/Refine Plans
- Discuss Potential Priorities



Group Summaries and Next Steps

- Group Summaries
- Concept Planning Prioritization
- Next Steps
 - Modal System Plan Development
 - Next Meeting: May 23rd





Norman Comprehensive Transportation Plan

TRANSPORTATION CONCEPTS

Sub-Committee Meeting
April 25, 2013