

---

***Lake Thunderbird TMDL Monitoring Plan Implementation:  
Sample Year (SY) 2016- January Report***

---



**SY2016 Monthly Report**

---

*Lake Thunderbird TMDL Monitoring Plan Implementation:*

*January 2017 Monitoring Report*

---

Oklahoma Water Resources Board  
Water Quality Programs Division  
Monitoring and Assessment Section  
3800 N. Classen, Oklahoma City, Oklahoma 73118  
405-530-8800

Contact

Sarah Dexter, Project Leader, [sarah.dexter@owrb.ok.gov](mailto:sarah.dexter@owrb.ok.gov)

Jason Murphy, Project Supervisor, [jason.murphy@owrb.ok.gov](mailto:jason.murphy@owrb.ok.gov)

Lance Phillips, Streams Program Manager, [lance.phillips@owrb.ok.gov](mailto:lance.phillips@owrb.ok.gov)

Bill Cauthron, Monitoring Coordinator, [bill.cauthron@owrb.ok.gov](mailto:bill.cauthron@owrb.ok.gov)

---

---

## TABLE OF CONTENTS

<b>Table of Contents</b> .....	<b>3</b>
<b>List of Tables</b> .....	<b>3</b>
<b>List of Figures</b> .....	<b>3</b>
<b>Summary of January Water Quality Sampling</b> .....	<b>4</b>
<b>Results</b> .....	<b>4</b>

## LIST OF TABLES

TABLE 1 FIELD DATA FORM .....	5
TABLE 2 LABORATORY ANALYSIS SUMMARY .....	6
TABLE 3 MEASURED DISCHARGE SUMMARY .....	6

## LIST OF FIGURES

FIGURE 1 MONITORING STATION MAP .....	4
FIGURE 2 DISCHARGE SUMMARY CC-1 .....	7
FIGURE 3 DISCHARGE SUMMARY JB-1 .....	8
FIGURE 4 DISCHARGE SUMMARY LDB-1 .....	9
FIGURE 5 DISCHARGE SUMMARY LRC-1.....	10
FIGURE 6 DISCHARGE SUMMARY TE-1.....	11
FIGURE 7 DISCHARGE SUMMARY TG-1 .....	12
FIGURE 8 DISCHARGE SUMMARY UDB-1 .....	13
FIGURE 9 DISCHARGE SUMMARY URC-2.....	14
FIGURE 10 DISCHARGE SUMMARY WC-1.....	15
FIGURE 11 MONTHLY HYDROGRAPH JB-1 .....	16
FIGURE 12 MONTHLY HYDROGRAPH LDB-1 .....	16
FIGURE 13 MONTHLY HYDROGRAPH LT-1.....	16
FIGURE 14 MONTHLY HYDROGRAPH TE-1 .....	17
FIGURE 15 MONTHLY HYDROGRAPH TG-1.....	17
FIGURE 16 MONTHLY HYDROGRAPH UDB-1 .....	17
FIGURE 17 MONTHLY HYDROGRAPH URC-2 .....	18
FIGURE 18 MONTHLY HYDROGRAPH WC-1.....	18
FIGURE 19 MESONET DATA .....	19

## SUMMARY OF JANUARY WATER QUALITY SAMPLING

Sampling for January 2017 occurred on the eighteenth and was considered a base flow collection. All sites were at or near stage levels where greater than five discharge measurements have been collected this year. LT-1 was the only station where a flow measurement was not collected, due to the channel being disconnected at the culverts. Water quality measurements, however, were made at the ten designated monitoring stations. All water level gages were operational for the month with the exception of CC-1 and LRC-1. Both stations are recording data, but not transmitting, as a result of technical issues. Mesonet data for Norman shows a total of 1.84 inches of rainfall for the month of January with 1.63 inches of precipitation in the 72 hours preceding and no precipitation following the sampling event.

## RESULTS

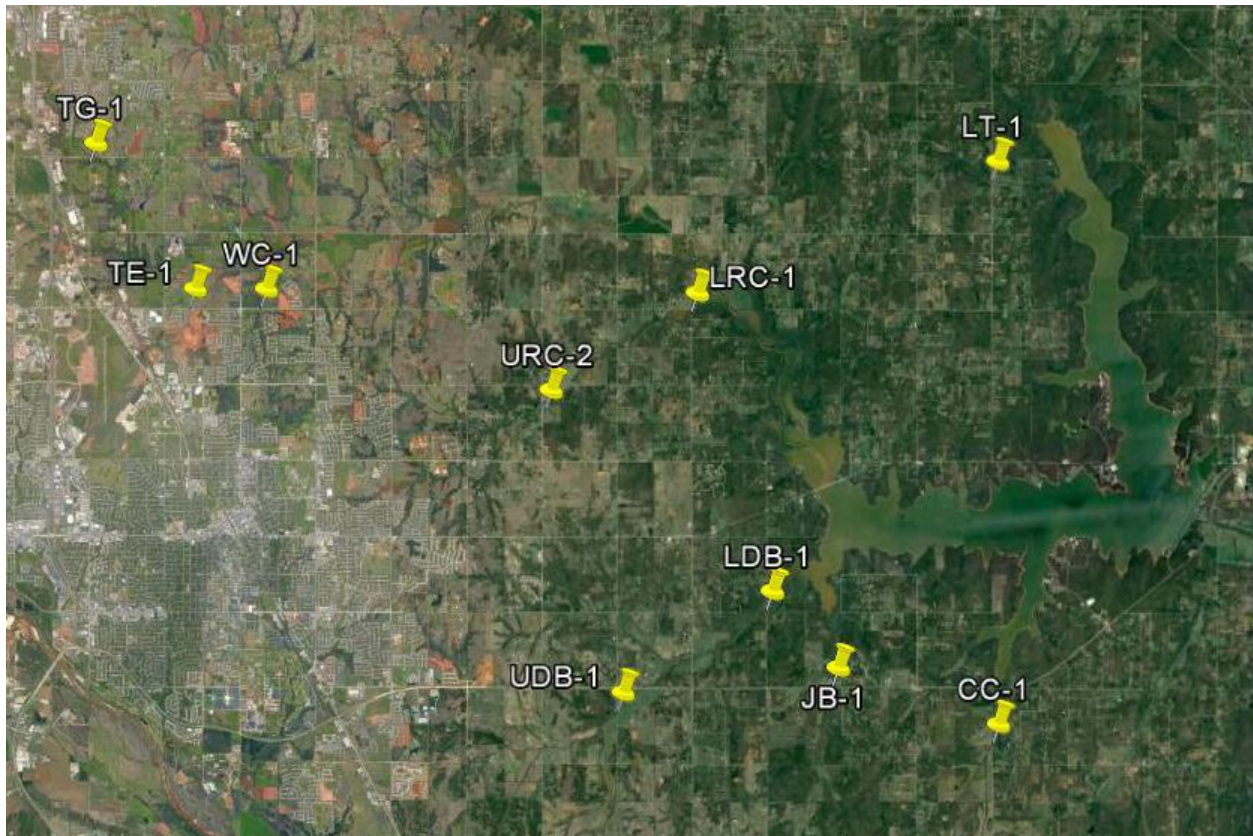


Figure 1 Monitoring Station Map

## Field Data Form

**Field Measurement Record**

**Reviewed By:** \_\_\_\_\_ **JM** \_\_\_\_\_

Station	Date	Time	Field Crew	Temp C°	DO mg/L	SpC µS	pH	Turb (NTU)	Notes
cc-1	1/18/2017	10:00	jw	7.0	11.3	658.0	8.1	7.0	
tg-1	1/18/2017	16:35	sd	N/A	N/A	N/A	N/A	N/A	QA 33
tg-1	1/18/2017	9:20	sd	6.0	10.6	560.0	7.7	38.0	
te-1	1/18/2017	11:00	sd	6.2	11.1	281.0	7.9	174.0	
wc-1	1/18/2017	12:35	sd	7.5	9.2	483.0	7.7	24.0	
urc-2	1/18/2017	14:05	sd	8.5	9.7	422.0	7.5	44.0	
lrc-1	1/18/2017	15:20	sd	8.0	10.3	824.0	7.8	13.0	changed dcp
lt-1	1/18/2017	9:10	jw	5.9	7.4	383.0	8.3	21.0	disconnected at culvert
jb-1	1/18/2017	11:45	jw	6.0	8.1	906.0	7.7	12.0	
udb-1	1/18/2017	12:55	jw	6.6	9.8	507.0	8.0	16.0	
ldb-1	1/18/2017	15:45	jw	8.3	9.5	397.0	8.3	172.0	

Table 1 Field Data Form

SITE NAME	QA CODE	TKN	NITRATE/NITRITE	TP	TSS
TG-1	10	0.200	0.379	0.095	34.60
CC-1	12	0.186	0.210	0.022	6.70
CC-1	22	0.192	0.211	0.031	6.90
JB-1	10	0.168	<0.050	0.029	8.00
UDB-1	10	0.153	<0.050	0.049	8.20
LDB-1	10	0.207	0.208	0.116	162.0
LRC-1	10	0.185	<0.050	0.174	8.10
URC-2	10	0.217	0.313	0.170	21.30
WC-1	10	0.112	0.191	0.030	14.40
TE-1	10	0.248	0.394	0.116	68.00
TG-1	33	0.167	<0.050	<0.015	<2.50
LT-1	10	0.120	0.224	0.112	13.2

Table 2 Laboratory Analysis Summary

SITE	TG-1	CC-1	JB-1	UDB-1	LDB-1	LRC-1	URC-2	WC-1	TE-1	LT-1
STAGE	9.19	0.36	15.73	17.56	14.79	18.79	12.36	8.63	11.65	2
DISCHARGE	1.133	0.481	0.016	0.388	0.291	0.121	0.018	0.002	0.047	N/A

Table 3 Measured Discharge Summary



# Discharge Measurement Summary

Date Generated: Thu Feb 2 2017

## File Information

File Name CC10118.WAD  
 Start Date and Time 2017/01/18 09:22:24

## Site Details

Site Name CC1  
 Operator(s) JW

## System Information

Sensor Type FlowTracker  
 Serial # P4713  
 CPU Firmware Version 3.9  
 Software Ver 2.30  
 Mounting Correction 0.0%

## Units (English Units)

Distance ft  
 Velocity ft/s  
 Area ft<sup>2</sup>  
 Discharge cfs

## Discharge Uncertainty

Category	ISO	Stats
Accuracy	1.0%	1.0%
Depth	0.6%	5.4%
Velocity	2.6%	21.9%
Width	0.2%	0.2%
Method	3.0%	-
# Stations	2.5%	-
<b>Overall</b>	<b>4.9%</b>	<b>22.6%</b>

## Summary

Averaging Int. 40 # Stations 20  
 Start Edge LEW Total Width 9.500  
 Mean SNR 40.5 dB Total Area 4.813  
 Mean Temp 42.70 °F Mean Depth 0.507  
 Disch. Equation Mid-Section Mean Velocity 0.0999  
**Total Discharge 0.4810**

## Supplemental Data

#	Time	Location	Gauge Height	Rated Flow	Comments
1	Wed Jan 18 09:21:01 CST 2017	0.000	0.360		

## Measurement Results

St	Clock	Loc	Method	Depth	%Dep	MeasD	Vel	CorrFact	MeanV	Area	Flow	%Q
0	09:22	0.00	None	0.000	0.0	0.0	0.0000	1.00	0.0000	0.000	0.0000	0.0
1	09:22	2.00	0.6	0.400	0.6	0.160	-0.0003	1.00	-0.0003	0.800	-0.0003	-0.1
2	09:23	4.00	0.6	0.600	0.6	0.240	-0.0591	1.00	-0.0591	0.900	-0.0532	-11.1
3	09:24	5.00	0.6	0.800	0.6	0.320	0.0023	1.00	0.0023	0.600	0.0014	0.3
4	09:25	5.50	0.6	0.700	0.6	0.280	0.0180	1.00	0.0180	0.350	0.0063	1.3
5	09:26	6.00	0.6	0.700	0.6	0.280	0.0174	1.00	0.0174	0.263	0.0046	0.9
6	09:27	6.25	0.6	0.700	0.6	0.280	-0.0020	1.00	-0.0020	0.175	-0.0003	-0.1
7	09:28	6.50	0.6	0.700	0.6	0.280	0.0161	1.00	0.0161	0.175	0.0028	0.6
8	09:29	6.75	0.6	0.700	0.6	0.280	0.0440	1.00	0.0440	0.175	0.0077	1.6
9	09:30	7.00	0.6	0.400	0.6	0.160	0.0623	1.00	0.0623	0.100	0.0062	1.3
10	09:31	7.25	0.6	0.500	0.6	0.200	0.1775	1.00	0.1775	0.125	0.0222	4.6
11	09:35	7.50	0.6	0.700	0.6	0.280	0.1854	1.00	0.1854	0.175	0.0324	6.7
12	09:36	7.75	0.6	0.700	0.6	0.280	0.1785	1.00	0.1785	0.175	0.0312	6.5
13	09:37	8.00	0.6	0.600	0.6	0.240	0.3317	1.00	0.3317	0.150	0.0498	10.3
14	09:38	8.25	0.6	0.600	0.6	0.240	0.4659	1.00	0.4659	0.150	0.0699	14.5
15	09:39	8.50	0.6	0.600	0.6	0.240	0.5630	1.00	0.5630	0.150	0.0845	17.6
16	09:40	8.75	0.6	0.600	0.6	0.240	0.6286	1.00	0.6286	0.150	0.0943	19.6
17	09:41	9.00	0.6	0.400	0.6	0.160	0.4239	1.00	0.4239	0.100	0.0424	8.8
18	09:42	9.25	0.6	0.400	0.6	0.160	0.7907	1.00	0.7907	0.100	0.0791	16.4
19	09:42	9.50	None	0.000	0.0	0.0	0.0000	1.00	0.0000	0.000	0.0000	0.0

Rows in italics indicate a QC warning. See the Quality Control page of this report for more information.

Figure 2 Discharge Summary CC-1

# Discharge Measurement Summary

Date Generated: Thu Feb 2 2017

File Information		Site Details	
File Name	JB10118.WAD	Site Name	JB1
Start Date and Time	2017/01/18 10:56:31	Operator(s)	JW

System Information		Units (English Units)		Discharge Uncertainty		
Sensor Type	FlowTracker	Distance	ft	Category	ISO	Stats
Serial #	P4713	Velocity	ft/s	Accuracy	1.0%	1.0%
CPU Firmware Version		Area	ft^2	Depth	0.6%	1.8%
Software Ver	2.30	Discharge	cfs	Velocity	4.7%	26.2%
Mounting Correction	0.0%			Width	0.2%	0.2%
				Method	3.2%	-
				# Stations	2.3%	-
				<b>Overall</b>	<b>6.2%</b>	<b>26.3%</b>

Summary			
Averaging Int.	40	# Stations	22
Start Edge	LEW	Total Width	8.000
Mean SNR	38.2 dB	Total Area	2.825
Mean Temp	46.71 °F	Mean Depth	0.353
Disch. Equation	Mid-Section	Mean Velocity	0.0055
		<b>Total Discharge</b>	<b>0.0157</b>

Supplemental Data					
#	Time	Location	Gauge Height	Rated Flow	Comments
1	Wed Jan 18 10:55:09 CST 2017	0.000	15.730		

Measurement Results													
St	Clock	Loc	Method	Depth	%Dep	MeasD	Vel	CorrFact	MeanV	Area	Flow	%Q	
0	10:56	0.00	None	0.000	0.0	0.0	0.0000	1.00	0.0000	0.000	0.0000	0.0	
1	10:56	1.00	0.6	0.400	0.6	0.160	-0.0026	1.00	-0.0026	0.400	-0.0010	-6.7	
2	10:57	2.00	0.6	0.500	0.6	0.200	-0.0007	1.00	-0.0007	0.313	-0.0002	-1.3	
3	10:58	2.25	0.6	0.500	0.6	0.200	-0.0020	1.00	-0.0020	0.125	-0.0002	-1.6	
4	10:59	2.50	0.6	0.500	0.6	0.200	-0.0154	1.00	-0.0154	0.125	-0.0019	-12.3	
5	11:00	2.75	0.6	0.500	0.6	0.200	0.0039	1.00	0.0039	0.125	0.0005	3.1	
6	11:01	3.00	0.6	0.500	0.6	0.200	0.0030	1.00	0.0030	0.125	0.0004	2.4	
7	11:02	3.25	0.6	0.500	0.6	0.200	-0.0039	1.00	-0.0039	0.125	-0.0005	-3.1	
8	11:03	3.50	0.6	0.500	0.6	0.200	0.0164	1.00	0.0164	0.125	0.0021	13.1	
9	11:04	3.75	0.6	0.500	0.6	0.200	0.0226	1.00	0.0226	0.125	0.0028	18.1	
10	11:04	4.00	0.6	0.500	0.6	0.200	0.0174	1.00	0.0174	0.125	0.0022	13.9	
11	11:05	4.25	0.6	0.500	0.6	0.200	0.0197	1.00	0.0197	0.125	0.0025	15.7	
12	11:06	4.50	0.6	0.500	0.6	0.200	0.0230	1.00	0.0230	0.125	0.0029	18.3	
13	11:07	4.75	0.6	0.400	0.6	0.160	0.0154	1.00	0.0154	0.100	0.0015	9.8	
14	11:08	5.00	0.6	0.400	0.6	0.160	0.0049	1.00	0.0049	0.100	0.0005	3.1	
15	11:09	5.25	0.6	0.400	0.6	0.160	0.0115	1.00	0.0115	0.100	0.0011	7.3	
16	11:10	5.50	0.6	0.300	0.6	0.120	0.0095	1.00	0.0095	0.075	0.0007	4.6	
17	11:11	5.75	0.6	0.300	0.6	0.120	0.0043	1.00	0.0043	0.075	0.0003	2.0	
18	11:12	6.00	0.6	0.300	0.6	0.120	0.0059	1.00	0.0059	0.075	0.0004	2.8	
19	11:13	6.25	0.6	0.300	0.6	0.120	0.0030	1.00	0.0030	0.075	0.0002	1.4	
20	11:14	6.50	0.6	0.300	0.6	0.120	0.0056	1.00	0.0056	0.262	0.0015	9.3	
21	11:14	8.00	None	0.000	0.0	0.0	0.0000	1.00	0.0000	0.000	0.0000	0.0	

Rows in italics indicate a QC warning. See the Quality Control page of this report for more information.

Figure 3 Discharge Summary JB-1



# Discharge Measurement Summary

Date Generated: Thu Feb 2 2017

## File Information

File Name LDB10118.WAD  
 Start Date and Time 2017/01/18 13:54:42

## Site Details

Site Name LDB1  
 Operator(s) JW

## System Information

Sensor Type FlowTracker  
 Serial # P4713  
 CPU Firmware Version 3.9  
 Software Ver 2.30  
 Mounting Correction 0.0%

## Units (English Units)

Distance ft  
 Velocity ft/s  
 Area ft<sup>2</sup>  
 Discharge cfs

## Discharge Uncertainty

Category	ISO	Stats
Accuracy	1.0%	1.0%
Depth	0.5%	12.9%
Velocity	4.2%	54.8%
Width	0.4%	0.4%
Method	5.7%	-
# Stations	1.9%	-
<b>Overall</b>	<b>7.4%</b>	<b>56.3%</b>

## Summary

Averaging Int. 40 # Stations 27  
 Start Edge LEW Total Width 19.000  
 Mean SNR 36.0 dB Total Area 20.224  
 Mean Temp 43.29 °F Mean Depth 1.064  
 Disch. Equation Mid-Section Mean Velocity 0.0144  
**Total Discharge 0.2905**

## Supplemental Data

#	Time	Location	Gauge Height	Rated Flow	Comments
1	Wed Jan 18 13:53:35 CST 2017	0.000	14.785		

## Measurement Results

St	Clock	Loc	Method	Depth	%Dep	MeasD	Vel	CorrFact	MeanV	Area	Flow	%Q
0	13:54	0.00	None	0.000	0.0	0.0	0.0000	1.00	0.0000	0.000	0.0000	0.0
1	14:15	3.00	0.6	0.300	0.6	0.120	0.0253	1.00	0.0253	0.525	0.0133	4.6
2	14:16	3.50	0.6	0.900	0.6	0.360	0.0043	1.00	0.0043	0.450	0.0019	0.7
3	13:56	4.00	0.6	0.800	0.6	0.320	-0.0318	1.00	-0.0318	0.600	-0.0191	-6.6
4	13:57	5.00	0.6	0.800	0.6	0.320	-0.0699	1.00	-0.0699	0.600	-0.0419	-14.4
5	14:19	5.50	0.6	1.900	0.6	0.760	-0.0643	1.00	-0.0643	0.950	-0.0611	-21.0
6	13:58	6.00	0.6	2.000	0.6	0.800	-0.0676	1.00	-0.0676	1.000	-0.0676	-23.3
7	14:20	6.50	0.6	2.000	0.6	0.800	-0.0308	1.00	-0.0308	1.000	-0.0308	-10.6
8	13:59	7.00	0.6	2.100	0.6	0.840	-0.0220	1.00	-0.0220	1.050	-0.0231	-7.9
9	14:22	7.50	0.6	1.900	0.6	0.760	0.0075	1.00	0.0075	0.950	0.0072	2.5
10	14:00	8.00	0.6	2.200	0.6	0.880	0.0253	1.00	0.0253	1.100	0.0278	9.6
11	14:23	8.50	0.6	1.800	0.6	0.720	0.0669	1.00	0.0669	0.900	0.0602	20.7
12	14:01	9.00	0.6	1.700	0.6	0.680	0.0266	1.00	0.0266	0.850	0.0226	7.8
13	14:24	9.50	0.6	1.400	0.6	0.560	0.1401	1.00	0.1401	0.700	0.0981	33.8
14	14:03	10.00	0.6	1.400	0.6	0.560	0.0502	1.00	0.0502	0.700	0.0351	12.1
15	14:26	10.50	0.6	1.800	0.6	0.720	0.1388	1.00	0.1388	0.900	0.1249	43.0
16	14:04	11.00	0.6	1.900	0.6	0.760	0.0105	1.00	0.0105	0.950	0.0100	3.4
17	14:27	11.50	0.6	1.900	0.6	0.760	0.0299	1.00	0.0299	0.950	0.0284	9.8
18	14:05	12.00	0.6	1.900	0.6	0.760	-0.0030	1.00	-0.0030	0.950	-0.0028	-1.0
19	14:28	12.50	0.6	1.700	0.6	0.680	0.0043	1.00	0.0043	0.850	0.0036	1.2
20	14:06	13.00	0.6	1.000	0.6	0.400	0.0322	1.00	0.0322	0.750	0.0241	8.3
21	14:07	14.00	0.6	1.000	0.6	0.400	-0.0154	1.00	-0.0154	1.000	-0.0154	-5.3
22	14:08	15.00	0.6	0.800	0.6	0.320	0.0390	1.00	0.0390	0.800	0.0312	10.8
23	14:09	16.00	0.6	0.500	0.6	0.200	0.0646	1.00	0.0646	0.500	0.0323	11.1
24	14:10	17.00	0.6	0.800	0.6	0.320	0.0335	1.00	0.0335	0.800	0.0268	9.2
25	14:11	18.00	0.6	0.400	0.6	0.160	0.0121	1.00	0.0121	0.400	0.0049	1.7
26	14:11	19.00	None	0.000	0.0	0.0	0.0000	1.00	0.0000	0.000	0.0000	0.0

Rows in italics indicate a QC warning. See the Quality Control page of this report for more information.

Figure 4 Discharge Summary LDB-1

# Discharge Measurement Summary

Date Generated: Thu Feb 2 2017

## File Information

File Name LRC0118.WAD  
Start Date and Time 2017/01/18 15:35:04

## Site Details

Site Name LRC  
Operator(s) SD

## System Information

Sensor Type FlowTracker  
Serial # P4710  
CPU Firmware Version 3.9  
Software Ver 2.30  
Mounting Correction 0.0%

## Units (English Units)

Distance ft  
Velocity ft/s  
Area ft<sup>2</sup>  
Discharge cfs

## Discharge Uncertainty

Category	ISO	Stats
Accuracy	1.0%	1.0%
Depth	0.5%	2.2%
Velocity	5.9%	36.9%
Width	0.3%	0.3%
Method	4.6%	-
# Stations	2.1%	-
<b>Overall</b>	<b>7.8%</b>	<b>36.9%</b>

## Summary

Averaging Int.	40	# Stations	24
Start Edge	LEW	Total Width	23.000
Mean SNR	43.8 dB	Total Area	24.400
Mean Temp	45.34 °F	Mean Depth	1.061
Disch. Equation	Mid-Section	Mean Velocity	0.0049
		<b>Total Discharge</b>	<b>0.1205</b>

## Supplemental Data

#	Time	Location	Gauge Height	Rated Flow	Comments
1	Wed Jan 18 15:33:13 CST 2017	0.000	18.790		

## Measurement Results

St	Clock	Loc	Method	Depth	%Dep	MeasD	Vel	CorrFact	MeanV	Area	Flow	%Q
0	15:35	0.00	None	0.000	0.0	0.0	0.0000	1.00	0.0000	0.000	0.0000	0.0
<i>1</i>	<i>15:35</i>	<i>1.00</i>	<i>0.6</i>	<i>0.600</i>	<i>0.6</i>	<i>0.240</i>	<i>-0.0564</i>	<i>1.00</i>	<i>-0.0564</i>	<i>0.600</i>	<i>-0.0339</i>	<i>-28.1</i>
2	15:36	2.00	0.6	0.800	0.6	0.320	-0.0039	1.00	-0.0039	0.800	-0.0031	-2.6
3	15:37	3.00	0.6	0.900	0.6	0.360	0.0010	1.00	0.0010	0.900	0.0009	0.7
4	15:38	4.00	0.6	0.900	0.6	0.360	-0.0013	1.00	-0.0013	0.900	-0.0012	-1.0
5	15:39	5.00	0.6	0.950	0.6	0.380	0.0056	1.00	0.0056	0.950	0.0053	4.4
6	15:40	6.00	0.6	1.000	0.6	0.400	0.0013	1.00	0.0013	1.000	0.0013	1.1
7	15:42	7.00	0.6	1.000	0.6	0.400	0.0030	1.00	0.0030	1.000	0.0030	2.5
<i>8</i>	<i>15:44</i>	<i>8.00</i>	<i>0.6</i>	<i>1.000</i>	<i>0.6</i>	<i>0.400</i>	<i>-0.0115</i>	<i>1.00</i>	<i>-0.0115</i>	<i>1.000</i>	<i>-0.0115</i>	<i>-9.5</i>
<i>9</i>	<i>15:45</i>	<i>9.00</i>	<i>0.6</i>	<i>1.100</i>	<i>0.6</i>	<i>0.440</i>	<i>0.0220</i>	<i>1.00</i>	<i>0.0220</i>	<i>1.100</i>	<i>0.0242</i>	<i>20.1</i>
10	15:46	10.00	0.6	1.250	0.6	0.500	0.0131	1.00	0.0131	1.250	0.0164	13.6
11	15:47	11.00	0.6	1.500	0.6	0.600	0.0098	1.00	0.0098	1.500	0.0148	12.3
12	15:48	12.00	0.6	1.700	0.6	0.680	0.0164	1.00	0.0164	1.700	0.0279	23.2
<i>13</i>	<i>15:50</i>	<i>13.00</i>	<i>0.6</i>	<i>1.800</i>	<i>0.6</i>	<i>0.720</i>	<i>0.0154</i>	<i>1.00</i>	<i>0.0154</i>	<i>1.800</i>	<i>0.0278</i>	<i>23.0</i>
<i>14</i>	<i>15:51</i>	<i>14.00</i>	<i>0.6</i>	<i>1.700</i>	<i>0.6</i>	<i>0.680</i>	<i>0.0167</i>	<i>1.00</i>	<i>0.0167</i>	<i>1.700</i>	<i>0.0284</i>	<i>23.6</i>
15	15:52	15.00	0.6	1.500	0.6	0.600	0.0112	1.00	0.0112	1.500	0.0167	13.9
16	15:54	16.00	0.6	1.300	0.6	0.520	0.0085	1.00	0.0085	1.300	0.0111	9.2
17	15:55	17.00	0.6	1.200	0.6	0.480	-0.0007	1.00	-0.0007	1.200	-0.0008	-0.7
18	15:56	18.00	0.6	1.000	0.6	0.400	0.0016	1.00	0.0016	1.000	0.0016	1.4
19	15:57	19.00	0.6	0.900	0.6	0.360	0.0007	1.00	0.0007	0.900	0.0006	0.5
20	15:58	20.00	0.6	0.800	0.6	0.320	0.0112	1.00	0.0112	0.800	0.0089	7.4
21	15:59	21.00	0.6	0.700	0.6	0.280	-0.0016	1.00	-0.0016	0.700	-0.0011	-1.0
<i>22</i>	<i>16:00</i>	<i>22.00</i>	<i>0.6</i>	<i>0.700</i>	<i>0.6</i>	<i>0.280</i>	<i>-0.0210</i>	<i>1.00</i>	<i>-0.0210</i>	<i>0.700</i>	<i>-0.0147</i>	<i>-12.2</i>
23	16:00	23.00	None	0.200	0.0	0.0	0.0000	1.00	-0.0210	0.100	-0.0021	-1.7

Rows in italics indicate a QC warning. See the Quality Control page of this report for more information.

Figure 5 Discharge Summary LRC-1



# Discharge Measurement Summary

Date Generated: Thu Feb 2 2017

## File Information

File Name TE0118.WAD  
Start Date and Time 2017/01/18 11:22:58

## Site Details

Site Name TE  
Operator(s) SD

## System Information

Sensor Type FlowTracker  
Serial # P4710  
CPU Firmware Version 3.9  
Software Ver 2.30  
Mounting Correction 0.0%

## Units (English Units)

Distance ft  
Velocity ft/s  
Area ft<sup>2</sup>  
Discharge cfs

## Discharge Uncertainty

Category	ISO	Stats
Accuracy	1.0%	1.0%
Depth	0.9%	10.5%
Velocity	5.8%	47.5%
Width	0.3%	0.3%
Method	4.8%	-
# Stations	3.0%	-
<b>Overall</b>	<b>8.2%</b>	<b>48.7%</b>

## Summary

Averaging Int.	40	# Stations	17
Start Edge	LEW	Total Width	9.000
Mean SNR	40.2 dB	Total Area	6.275
Mean Temp	43.59 °F	Mean Depth	0.697
Disch. Equation	Mid-Section	Mean Velocity	0.0075
		<b>Total Discharge</b>	<b>0.0469</b>

## Supplemental Data

#	Time	Location	Gauge Height	Rated Flow	Comments
1	Wed Jan 18 11:21:17 CST 2017	0.000	11.650		

## Measurement Results

St	Clock	Loc	Method	Depth	%Dep	MeasD	Vel	CorrFact	MeanV	Area	Flow	%Q
0	11:22	0.00	None	0.000	0.0	0.0	0.0000	1.00	0.0000	0.000	0.0000	0.0
1	11:22	1.00	0.6	0.500	0.6	0.200	-0.0003	1.00	-0.0003	0.375	-0.0001	-0.3
2	11:24	1.50	0.6	0.900	0.6	0.360	0.0108	1.00	0.0108	0.450	0.0049	10.4
3	11:25	2.00	0.6	1.000	0.6	0.400	-0.0072	1.00	-0.0072	0.500	-0.0036	-7.7
4	11:26	2.50	0.6	0.900	0.6	0.360	0.0020	1.00	0.0020	0.450	0.0009	1.9
5	11:27	3.00	0.6	1.000	0.6	0.400	-0.0082	1.00	-0.0082	0.500	-0.0041	-8.7
6	11:28	3.50	0.6	1.100	0.6	0.440	0.0003	1.00	0.0003	0.550	0.0002	0.4
7	11:30	4.00	0.6	1.000	0.6	0.400	0.0157	1.00	0.0157	0.500	0.0079	16.8
8	11:30	4.50	0.6	1.000	0.6	0.400	0.0157	1.00	0.0157	0.500	0.0079	16.8
9	11:32	5.00	0.6	0.900	0.6	0.360	0.0262	1.00	0.0262	0.450	0.0118	25.2
10	11:32	5.50	0.6	0.900	0.6	0.360	0.0187	1.00	0.0187	0.450	0.0084	17.9
11	11:34	6.00	0.6	0.800	0.6	0.320	0.0180	1.00	0.0180	0.400	0.0072	15.4
12	11:35	6.50	0.6	0.700	0.6	0.280	0.0243	1.00	0.0243	0.350	0.0085	18.1
13	11:36	7.00	0.6	0.700	0.6	0.280	0.0236	1.00	0.0236	0.350	0.0083	17.6
14	11:37	7.50	0.6	0.300	0.6	0.120	0.0358	1.00	0.0358	0.150	0.0054	11.4
15	11:42	8.00	0.6	0.400	0.6	0.160	-0.0551	1.00	-0.0551	0.300	-0.0165	-35.3
16	11:42	9.00	None	0.000	0.0	0.0	0.0000	1.00	0.0000	0.000	0.0000	0.0

Rows in italics indicate a QC warning. See the Quality Control page of this report for more information.

Figure 6 Discharge Summary TE-1

# Discharge Measurement Summary

Date Generated: Thu Feb 2 2017

<b>File Information</b>		<b>Site Details</b>	
File Name	TG0118.WAD	Site Name	TG
Start Date and Time	2017/01/18 09:51:47	Operator(s)	SD

<b>System Information</b>		<b>Units (English Units)</b>		<b>Discharge Uncertainty</b>		
Sensor Type	FlowTracker	Distance	ft	<b>Category</b>	<b>ISO</b>	<b>Stats</b>
Serial #	P4710	Velocity	ft/s	Accuracy	1.0%	1.0%
CPU Firmware Version	3.9	Area	ft^2	Depth	0.3%	1.2%
Software Ver	2.30	Discharge	cfs	Velocity	0.6%	4.1%
Mounting Correction	0.0%			Width	0.1%	0.1%
				Method	1.9%	-
				# Stations	2.2%	-
				<b>Overall</b>	<b>3.1%</b>	<b>4.4%</b>

<b>Summary</b>			
Averaging Int.	40	# Stations	23
Start Edge	LEW	Total Width	19.000
Mean SNR	23.7 dB	Total Area	13.625
Mean Temp	42.60 °F	Mean Depth	0.717
Disch. Equation	Mid-Section	Mean Velocity	0.0831
		<b>Total Discharge</b>	<b>1.1326</b>

<b>Supplemental Data</b>					
#	Time	Location	Gauge Height	Rated Flow	Comments
1	Wed Jan 18 09:48:56 CST 2017	0.000	9.190		

<b>Measurement Results</b>												
St	Clock	Loc	Method	Depth	%Dep	MeasD	Vel	CorrFact	MeanV	Area	Flow	%Q
0	09:51	0.00	None	0.000	0.0	0.0	0.0000	1.00	0.0000	0.000	0.0000	0.0
<i>1</i>	<i>09:51</i>	<i>1.00</i>	<i>0.6</i>	<i>0.600</i>	<i>0.6</i>	<i>0.240</i>	<i>-0.0003</i>	<i>1.00</i>	<i>-0.0003</i>	<i>0.600</i>	<i>-0.0002</i>	<i>0.0</i>
2	09:53	2.00	0.6	0.800	0.6	0.320	0.0978	1.00	0.0978	0.800	0.0782	6.9
3	09:54	3.00	0.6	0.950	0.6	0.380	0.0866	1.00	0.0866	0.950	0.0823	7.3
4	09:55	4.00	0.6	1.100	0.6	0.440	0.0866	1.00	0.0866	1.100	0.0953	8.4
5	09:56	5.00	0.6	1.100	0.6	0.440	0.0587	1.00	0.0587	0.825	0.0485	4.3
6	10:16	5.50	0.6	1.100	0.6	0.440	0.0755	1.00	0.0755	0.550	0.0415	3.7
7	09:59	6.00	0.6	1.100	0.6	0.440	0.1184	1.00	0.1184	0.550	0.0651	5.8
8	10:14	6.50	0.6	1.100	0.6	0.440	0.1230	1.00	0.1230	0.550	0.0677	6.0
9	10:00	7.00	0.6	1.000	0.6	0.400	0.1198	1.00	0.1198	0.500	0.0599	5.3
10	10:15	7.50	0.6	1.000	0.6	0.400	0.0928	1.00	0.0928	0.500	0.0464	4.1
11	10:00	8.00	0.6	1.000	0.6	0.400	0.1135	1.00	0.1135	0.750	0.0851	7.5
12	10:01	9.00	0.6	0.900	0.6	0.360	0.1220	1.00	0.1220	0.900	0.1098	9.7
<i>13</i>	<i>10:02</i>	<i>10.00</i>	<i>0.6</i>	<i>0.900</i>	<i>0.6</i>	<i>0.360</i>	<i>0.0988</i>	<i>1.00</i>	<i>0.0988</i>	<i>0.900</i>	<i>0.0889</i>	<i>7.8</i>
14	10:03	11.00	0.6	0.800	0.6	0.320	0.0646	1.00	0.0646	0.800	0.0517	4.6
15	10:04	12.00	0.6	0.700	0.6	0.280	0.0830	1.00	0.0830	0.700	0.0581	5.1
16	10:05	13.00	0.6	0.500	0.6	0.200	0.1070	1.00	0.1070	0.500	0.0535	4.7
17	10:07	14.00	0.6	0.300	0.6	0.120	0.0938	1.00	0.0938	0.300	0.0281	2.5
18	10:08	15.00	0.6	0.400	0.6	0.160	0.0728	1.00	0.0728	0.400	0.0291	2.6
<i>19</i>	<i>10:09</i>	<i>16.00</i>	<i>0.6</i>	<i>0.400</i>	<i>0.6</i>	<i>0.160</i>	<i>0.0404</i>	<i>1.00</i>	<i>0.0404</i>	<i>0.400</i>	<i>0.0161</i>	<i>1.4</i>
<i>20</i>	<i>10:10</i>	<i>17.00</i>	<i>0.6</i>	<i>0.400</i>	<i>0.6</i>	<i>0.160</i>	<i>0.0279</i>	<i>1.00</i>	<i>0.0279</i>	<i>0.400</i>	<i>0.0112</i>	<i>1.0</i>
<i>21</i>	<i>10:12</i>	<i>18.00</i>	<i>0.6</i>	<i>0.500</i>	<i>0.6</i>	<i>0.200</i>	<i>0.0249</i>	<i>1.00</i>	<i>0.0249</i>	<i>0.500</i>	<i>0.0125</i>	<i>1.1</i>
22	10:12	19.00	None	0.300	0.0	0.0	0.0000	1.00	0.0249	0.150	0.0037	0.3

Rows in italics indicate a QC warning. See the Quality Control page of this report for more information.

Figure 7 Discharge Summary TG-1



# Discharge Measurement Summary

Date Generated: Thu Feb 2 2017

## File Information

File Name UDB10118.WAD  
Start Date and Time 2017/01/18 12:17:06

## Site Details

Site Name UDB1  
Operator(s) JW

## System Information

Sensor Type FlowTracker  
Serial # P4713  
CPU Firmware Version  
Software Ver 2.30  
Mounting Correction 0.0%

## Units (English Units)

Distance ft  
Velocity ft/s  
Area ft<sup>2</sup>  
Discharge cfs

## Discharge Uncertainty

Category	ISO	Stats
Accuracy	1.0%	1.0%
Depth	0.1%	1.3%
Velocity	2.4%	9.2%
Width	0.1%	0.1%
Method	2.1%	-
# Stations	1.8%	-
<b>Overall</b>	<b>3.8%</b>	<b>9.3%</b>

## Summary

Averaging Int. 40 # Stations 28  
Start Edge LEW Total Width 10.000  
Mean SNR 32.6 dB Total Area 14.575  
Mean Temp 42.14 °F Mean Depth 1.457  
Disch. Equation Mid-Section Mean Velocity 0.0266  
**Total Discharge 0.3880**

## Supplemental Data

#	Time	Location	Gauge Height	Rated Flow	Comments
1	Wed Jan 18 12:15:31 CST 2017	0.000	17.560		

## Measurement Results

St	Clock	Loc	Method	Depth	%Dep	MeasD	Vel	CorrFact	MeanV	Area	Flow	%Q
0	12:17	0.00	None	0.000	0.0	0.0	0.0000	1.00	0.0000	0.000	0.0000	0.0
1	12:18	1.00	0.6	1.300	0.6	0.520	-0.0013	1.00	-0.0013	1.300	-0.0017	-0.4
2	12:19	2.00	0.6	1.400	0.6	0.560	-0.0200	1.00	-0.0200	1.400	-0.0280	-7.2
3	12:20	3.00	0.6	1.500	0.6	0.600	-0.0112	1.00	-0.0112	1.500	-0.0167	-4.3
4	12:21	4.00	0.6	1.800	0.6	0.720	0.0407	1.00	0.0407	1.125	0.0458	11.8
5	12:22	4.25	0.6	1.900	0.6	0.760	0.0098	1.00	0.0098	0.475	0.0047	1.2
6	12:23	4.50	0.6	1.900	0.6	0.760	0.0043	1.00	0.0043	0.475	0.0020	0.5
7	12:24	4.75	0.6	2.000	0.6	0.800	0.0226	1.00	0.0226	0.500	0.0113	2.9
8	12:25	5.00	0.6	1.900	0.6	0.760	0.0344	1.00	0.0344	0.475	0.0164	4.2
9	12:26	5.25	0.6	1.900	0.6	0.760	0.0502	1.00	0.0502	0.475	0.0238	6.1
10	12:27	5.50	0.6	2.000	0.6	0.800	0.0489	1.00	0.0489	0.500	0.0244	6.3
11	12:28	5.75	0.6	2.000	0.6	0.800	0.0341	1.00	0.0341	0.500	0.0171	4.4
12	12:29	6.00	0.6	1.900	0.6	0.760	0.0325	1.00	0.0325	0.475	0.0154	4.0
13	12:30	6.25	0.6	1.900	0.6	0.760	0.0259	1.00	0.0259	0.475	0.0123	3.2
14	12:31	6.50	0.6	1.900	0.6	0.760	0.0115	1.00	0.0115	0.475	0.0055	1.4
15	12:32	6.75	0.6	1.900	0.6	0.760	0.0154	1.00	0.0154	0.475	0.0073	1.9
16	12:33	7.00	0.6	1.900	0.6	0.760	0.0528	1.00	0.0528	0.475	0.0251	6.5
17	12:34	7.25	0.6	1.800	0.6	0.720	0.0600	1.00	0.0600	0.450	0.0270	7.0
18	12:35	7.50	0.6	1.800	0.6	0.720	0.0817	1.00	0.0817	0.450	0.0368	9.5
19	12:36	7.75	0.6	1.700	0.6	0.680	0.0873	1.00	0.0873	0.425	0.0371	9.6
20	12:37	8.00	0.6	1.700	0.6	0.680	0.0709	1.00	0.0709	0.425	0.0301	7.8
21	12:38	8.25	0.6	1.600	0.6	0.640	0.0404	1.00	0.0404	0.400	0.0161	4.2
22	12:39	8.50	0.6	1.500	0.6	0.600	0.0390	1.00	0.0390	0.375	0.0146	3.8
23	12:40	8.75	0.6	1.200	0.6	0.480	0.0390	1.00	0.0390	0.300	0.0117	3.0
24	12:41	9.00	0.6	1.000	0.6	0.400	0.0748	1.00	0.0748	0.250	0.0187	4.8
25	12:42	9.25	0.6	1.000	0.6	0.400	0.0797	1.00	0.0797	0.250	0.0199	5.1
26	12:43	9.50	0.6	0.400	0.6	0.160	0.0748	1.00	0.0748	0.150	0.0112	2.9
27	12:43	10.00	None	0.000	0.0	0.0	0.0000	1.00	0.0000	0.000	0.0000	0.0

Rows in italics indicate a QC warning. See the Quality Control page of this report for more information.

Figure 8 Discharge Summary UDB-1



# Discharge Measurement Summary

Date Generated: Thu Feb 2 2017

## File Information

File Name URC0118.WAD  
 Start Date and Time 2017/01/18 14:15:27

## Site Details

Site Name URC  
 Operator(s) SD

## System Information

Sensor Type FlowTracker  
 Serial # P4710  
 CPU Firmware Version 3.9  
 Software Ver 2.30  
 Mounting Correction 0.0%

## Units (English Units)

Distance ft  
 Velocity ft/s  
 Area ft<sup>2</sup>  
 Discharge cfs

## Discharge Uncertainty

Category	ISO	Stats
Accuracy	1.0%	1.0%
Depth	1.0%	9.1%
Velocity	3.9%	48.8%
Width	0.3%	0.3%
Method	5.1%	-
# Stations	7.8%	-
<b>Overall</b>	<b>10.1%</b>	<b>49.7%</b>

## Summary

Averaging Int.	40	# Stations	7
Start Edge	LEW	Total Width	3.000
Mean SNR	27.0 dB	Total Area	1.150
Mean Temp	47.38 °F	Mean Depth	0.383
Disch. Equation	Mid-Section	Mean Velocity	0.0157
		<b>Total Discharge</b>	<b>0.0180</b>

## Supplemental Data

#	Time	Location	Gauge Height	Rated Flow	Comments
1	Wed Jan 18 14:13:26 CST 2017	0.000	12.360		

## Measurement Results

St	Clock	Loc	Method	Depth	%Dep	MeasD	Vel	CorrFact	MeanV	Area	Flow	%Q
0	14:15	0.00	None	0.000	0.0	0.0	0.0000	1.00	0.0000	0.000	0.0000	0.0
<i>1</i>	<i>14:15</i>	<i>0.50</i>	<i>0.6</i>	<i>0.500</i>	<i>0.6</i>	<i>0.200</i>	<i>-0.0020</i>	<i>1.00</i>	<i>-0.0020</i>	<i>0.250</i>	<i>-0.0005</i>	<i>-2.7</i>
<i>2</i>	<i>14:17</i>	<i>1.00</i>	<i>0.6</i>	<i>0.600</i>	<i>0.6</i>	<i>0.240</i>	<i>0.0072</i>	<i>1.00</i>	<i>0.0072</i>	<i>0.300</i>	<i>0.0022</i>	<i>12.0</i>
<i>3</i>	<i>14:18</i>	<i>1.50</i>	<i>0.6</i>	<i>0.500</i>	<i>0.6</i>	<i>0.200</i>	<i>-0.0020</i>	<i>1.00</i>	<i>-0.0020</i>	<i>0.250</i>	<i>-0.0005</i>	<i>-2.7</i>
4	14:19	2.00	0.6	0.400	0.6	0.160	0.0449	1.00	0.0449	0.200	0.0090	49.8
5	14:22	2.50	0.6	0.300	0.6	0.120	0.0525	1.00	0.0525	0.150	0.0079	43.6
6	14:22	3.00	None	0.000	0.0	0.0	0.0000	1.00	0.0000	0.000	0.0000	0.0

Rows in italics indicate a QC warning. See the Quality Control page of this report for more information.

Figure 9 Discharge Summary URC-2

# Discharge Measurement Summary

Date Generated: Thu Feb 2 2017

## File Information

File Name WC0118.WAD  
Start Date and Time 2017/01/18 12:47:18

## Site Details

Site Name WC  
Operator(s) SD

## System Information

Sensor Type FlowTracker  
Serial # P4710  
CPU Firmware Version 3.9  
Software Ver 2.30  
Mounting Correction 0.0%

## Units (English Units)

Distance ft  
Velocity ft/s  
Area ft<sup>2</sup>  
Discharge cfs

## Discharge Uncertainty

Category	ISO	Stats
Accuracy	1.0%	1.0%
Depth	7.2%	50.2%
Velocity	44.8%	223.9%
Width	2.4%	2.4%
Method	36.2%	-
# Stations	2.3%	-
<b>Overall</b>	<b>58.1%</b>	<b>229.4%</b>

## Summary

Averaging Int.	40	# Stations	22
Start Edge	LEW	Total Width	11.000
Mean SNR	44.3 dB	Total Area	3.150
Mean Temp	46.47 °F	Mean Depth	0.286
Disch. Equation	Mid-Section	Mean Velocity	0.0007
		<b>Total Discharge</b>	<b>0.0022</b>

## Supplemental Data

#	Time	Location	Gauge Height	Rated Flow	Comments
1	Wed Jan 18 12:45:32 CST 2017	0.000	8.630		

## Measurement Results

St	Clock	Loc	Method	Depth	%Dep	MeasD	Vel	CorrFact	MeanV	Area	Flow	%Q
0	12:47	0.00	None	0.000	0.0	0.0	0.0000	1.00	0.0000	0.000	0.0000	0.0
1	12:47	0.50	0.6	0.200	0.6	0.080	-0.0046	1.00	-0.0046	0.100	-0.0005	-20.4
2	12:48	1.00	0.6	0.200	0.6	0.080	-0.0030	1.00	-0.0030	0.150	-0.0004	-19.7
3	12:49	2.00	0.6	0.200	0.6	0.080	-0.0121	1.00	-0.0121	0.150	-0.0018	-81.0
4	12:50	2.50	0.6	0.200	0.6	0.080	0.0020	1.00	0.0020	0.100	0.0002	8.8
5	12:51	3.00	0.6	0.200	0.6	0.080	0.0039	1.00	0.0039	0.100	0.0004	17.5
6	12:52	3.50	0.6	0.200	0.6	0.080	-0.0026	1.00	-0.0026	0.100	-0.0003	-11.7
7	12:53	4.00	0.6	0.300	0.6	0.120	0.0033	1.00	0.0033	0.150	0.0005	21.9
8	12:55	4.50	0.6	0.300	0.6	0.120	-0.0013	1.00	-0.0013	0.150	-0.0002	-8.7
9	12:56	5.00	0.6	0.300	0.6	0.120	0.0233	1.00	0.0233	0.150	0.0035	155.3
10	12:57	5.50	0.6	0.300	0.6	0.120	0.0243	1.00	0.0243	0.150	0.0036	161.8
11	12:58	6.00	0.6	0.300	0.6	0.120	0.0121	1.00	0.0121	0.150	0.0018	80.9
12	12:59	6.50	0.6	0.300	0.6	0.120	-0.0072	1.00	-0.0072	0.150	-0.0011	-48.1
13	13:00	7.00	0.6	0.350	0.6	0.140	-0.0069	1.00	-0.0069	0.175	-0.0012	-53.6
14	13:01	7.50	0.6	0.350	0.6	0.140	-0.0059	1.00	-0.0059	0.175	-0.0010	-46.0
15	13:02	8.00	0.6	0.400	0.6	0.160	0.0013	1.00	0.0013	0.200	0.0003	11.7
16	13:03	8.50	0.6	0.300	0.6	0.120	0.0075	1.00	0.0075	0.150	0.0011	50.3
17	13:04	9.00	0.6	0.400	0.6	0.160	0.0243	1.00	0.0243	0.200	0.0049	215.9
18	13:05	9.50	0.6	0.400	0.6	0.160	0.0125	1.00	0.0125	0.200	0.0025	110.8
19	13:06	10.00	0.6	0.500	0.6	0.200	-0.0194	1.00	-0.0194	0.250	-0.0048	-215.2
20	13:07	10.50	0.6	0.400	0.6	0.160	-0.0259	1.00	-0.0259	0.200	-0.0052	-230.4
21	13:07	11.00	None	0.000	0.0	0.0	0.0000	1.00	0.0000	0.000	0.0000	0.0

Rows in italics indicate a QC warning. See the Quality Control page of this report for more information.

Figure 10 Discharge Summary WC-1

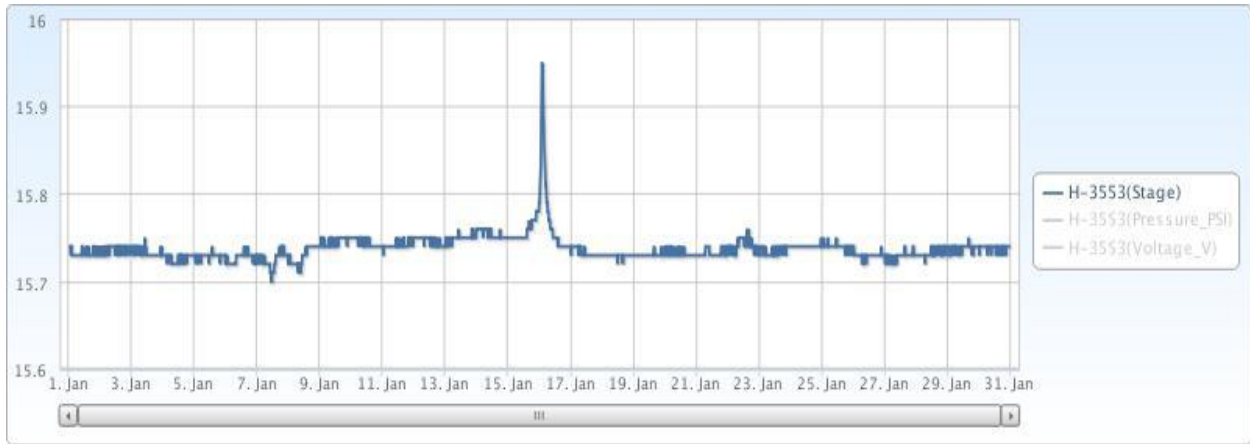


Figure 11 Monthly Hydrograph JB-1

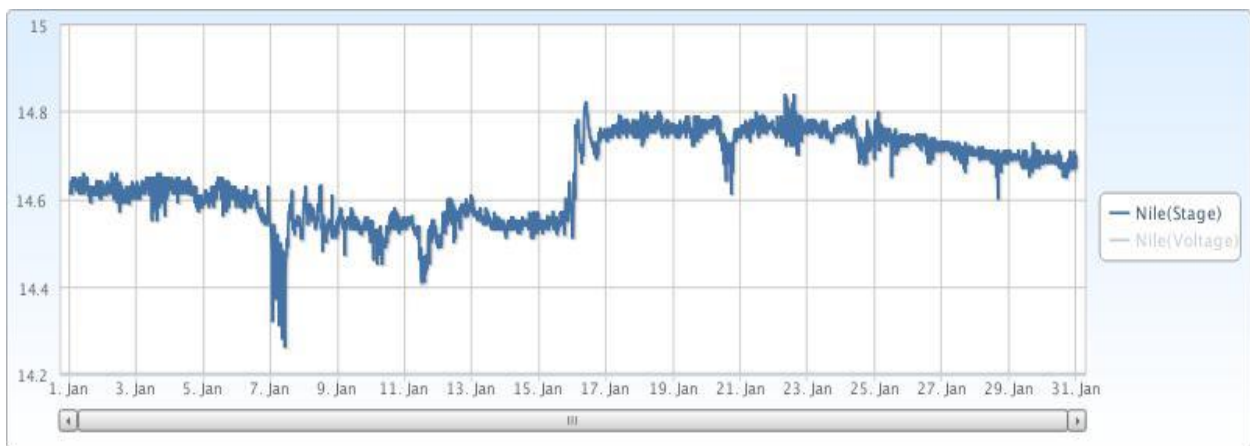


Figure 12 Monthly Hydrograph LDB-1

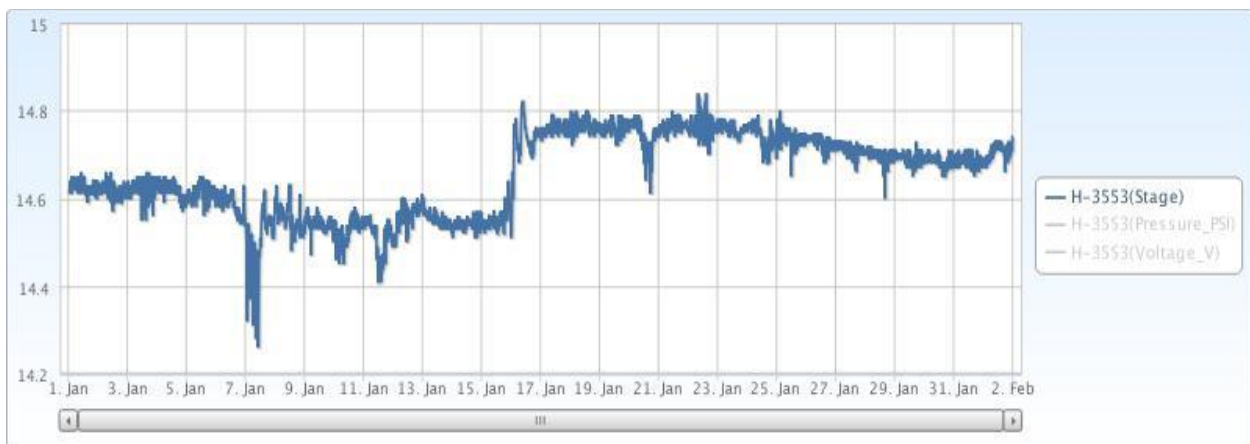


Figure 13 Monthly Hydrograph LT-1



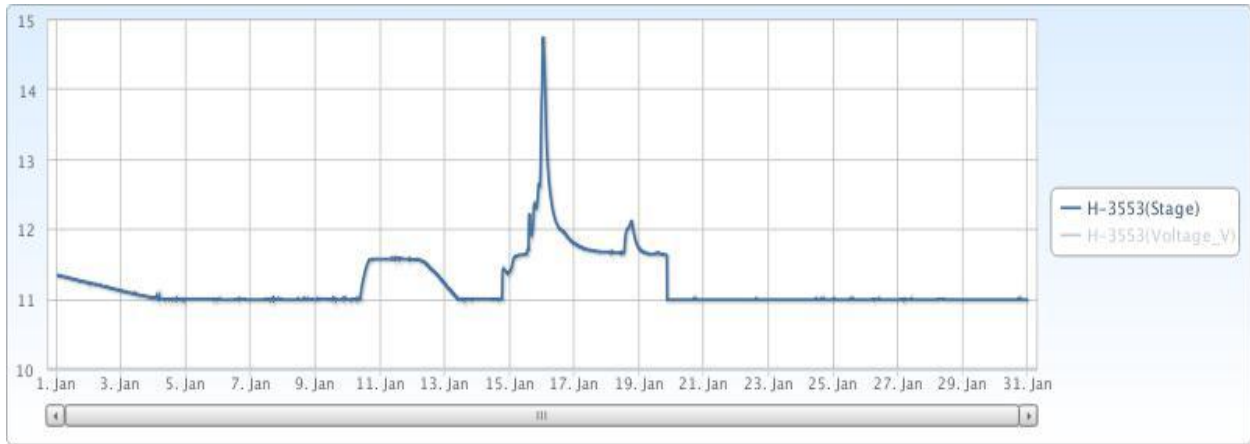


Figure 14 Monthly Hydrograph TE-1

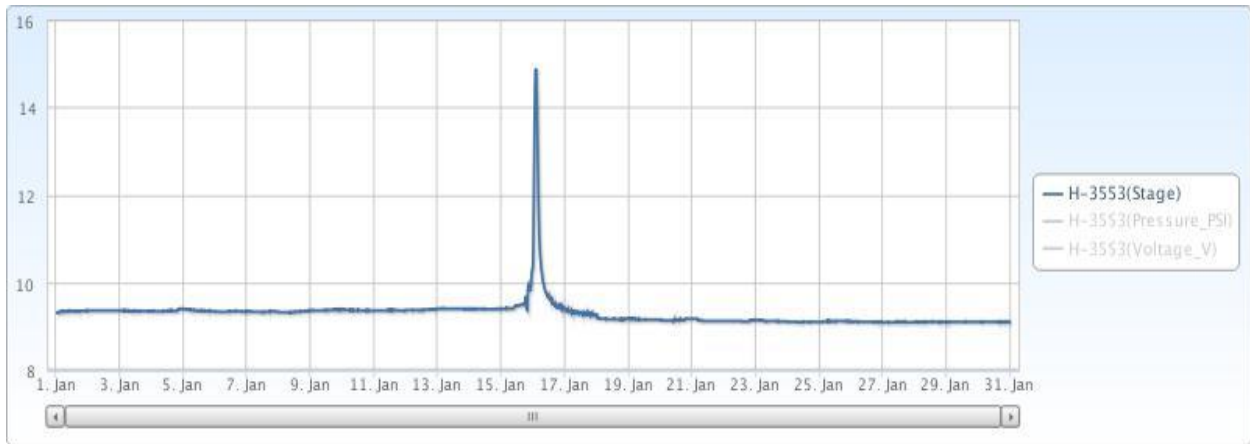


Figure 15 Monthly Hydrograph TG-1

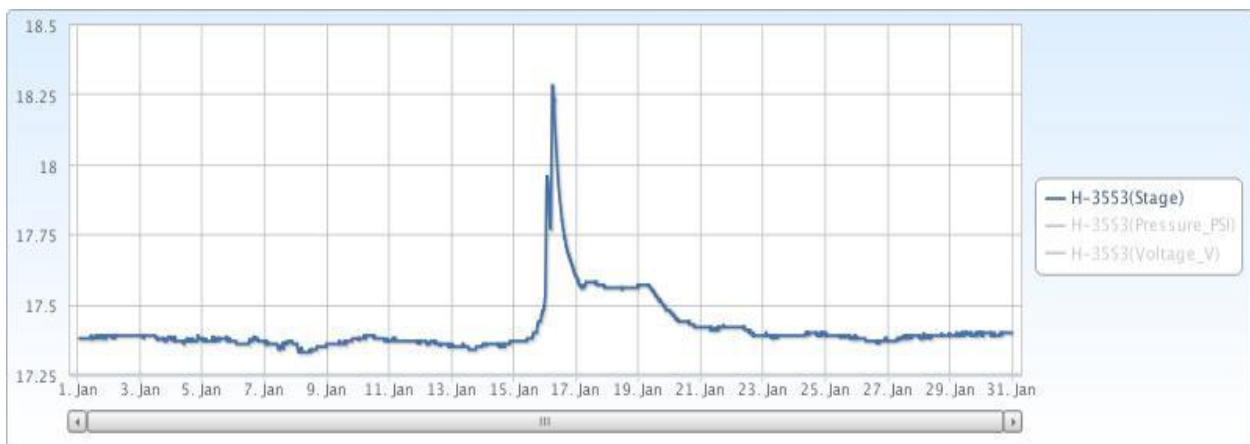


Figure 16 Monthly Hydrograph UDB-1

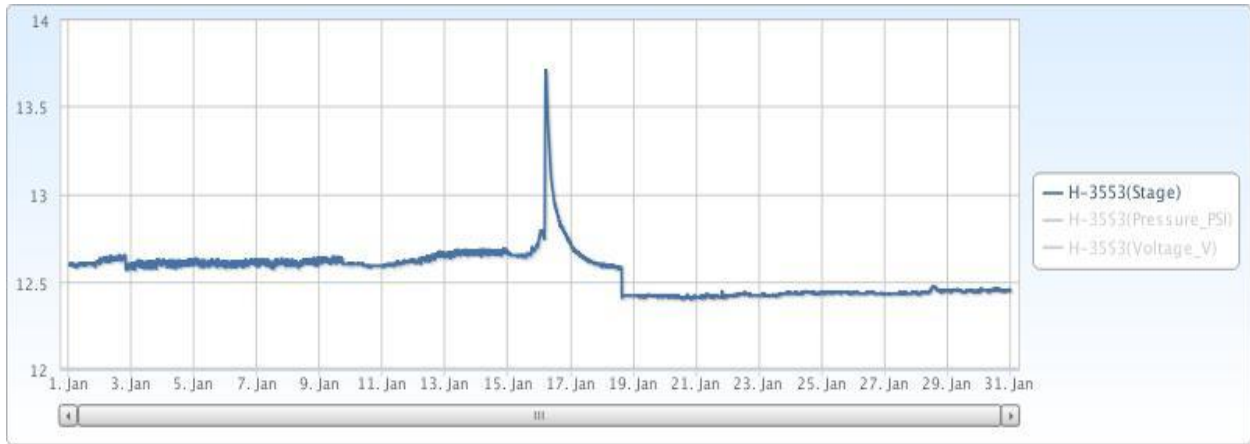


Figure 17 Monthly Hydrograph URC-2

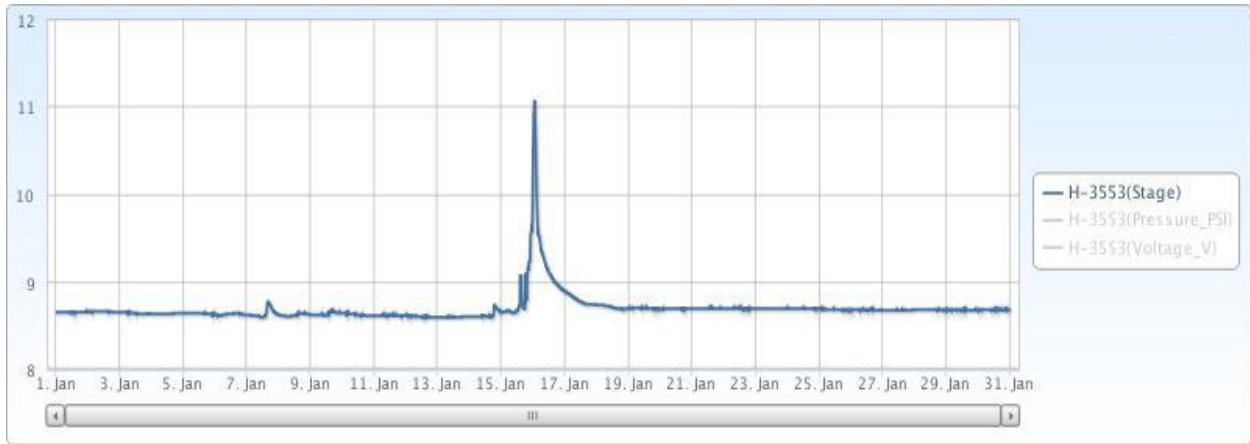


Figure 18 Monthly Hydrograph WC-1



MESONET CLIMATOLOGICAL DATA SUMMARY				January 2017				Time Zone: Midnight-Midnight CST													
(NRMN) Norman				Nearest City: 2.1 NW Norman				County: Cleveland													
Latitude: 35-14-09				Longitude: 97-27-53				Elevation: 1171 feet													
DAY	TEMPERATURE ( °F )				DEG DAYS		HUMIDITY (%)			RAIN (in)		PRESSURE (in)		WIND SPEED (mph)			SOLAR (MJ/m <sup>2</sup> )	4" SOIL TEMPERATURES			
	MAX	MIN	AVG	DEWPT	HDD	CDD	MAX	MIN	AVG		STN	MSL	DIR	AVG	MAX	SOD		BARE	MAX	MIN	
1	62	32	46.6	37.9	18	0	99	45	73	0.00	28.60	29.84	SSE	7.0	22.2	9.48	46.4	46.5	51	43	
2	70	40	56.6	47.8	10	0	100	36	76	0.01	28.53	29.77	SW	8.6	21.1	11.30	50.7	52.5	57	50	
3	46	27	35.5	26.1	29	0	97	45	70	0.00	28.84	30.09	NNW	16.1	33.2	3.16	48.2	47.6	51	44	
4	36	21	27.3	11.2	37	0	68	31	52	0.00	28.89	30.14	NNE	8.4	20.8	11.04	44.2	42.2	46	40	
5	26	16	22.0	10.2	44	0	81	54	60	0.00	28.86	30.11	N	14.5	28.7	3.50	41.5	38.3	41	37	
6	18	3	13.3	8.9	54	0	95	65	83	0.00	29.11	30.37	NNE	7.8	19.5	5.99	40.3	36.8	37	36	
7	34	-2	17.3	10.1	49	0	96	45	75	0.07	29.36	30.63	WSW	3.8	14.5	12.63	39.7	36.4	37	36	
8	45	20	31.6	13.2	33	0	76	23	50	0.02	29.20	30.47	S	9.4	27.0	12.26	39.1	36.8	39	36	
9	59	31	44.7	31.8	20	0	78	48	61	0.00	28.82	30.07	S	11.7	28.6	9.81	40.8	38.6	43	35	
10	68*	37*	56.7*	33.6*	13*	0*	74*	17*	45*	0.00*	28.61*	29.86*	SSW*	10.5*	33.3*	9.44*	46.1*	46.7*	51*	43*	
11	79	36	62.1	44.5	8	0	85	28	55	0.00	28.51	29.75	S	12.8	36.4	10.92	47.4	48.6	54	44	
12	66	25	36.1	21.5	19	0	74	38	56	0.00	28.89	30.14	N	12.8	26.5	11.55	48.0	48.1	53	45	
13	36	28	30.2	26.6	33	0	100	58	88	0.00	29.16	30.42	N	10.8	19.8	1.96	44.7	43.0	46	41	
14	33	29	31.1	31.0	34	0	100	99	100	0.11	29.17	30.43	N *	NA	15.4*	1.89	43.1	40.2	41	40	
15	48	32	36.9	36.9	25	0	100	100	100	1.59	28.86	30.11	NE *	NA	27.5*	1.12	42.9	40.5	43	39	
16	51	35	42.2	38.3	22	0	100	60	87	0.04	28.70	29.95	SW	10.9	27.1	8.88	44.4	43.6	47	42	
17	54	32	43.6	35.5	22	0	99	42	76	0.00	28.89	30.14	NNW	6.1	18.5	12.49	44.8	43.3	49	39	
18	56	34	46.6	42.1	20	0	100	62	86	0.00	28.81	30.06	S	3.7	12.4	6.23	46.2	45.6	50	41	
19	59	45	50.7	46.8	13	0	100	63	87	0.00	28.45	29.68	SSE	9.7	24.1	9.39	48.2	48.7	52	47	
20	70	40	54.0	38.3	10	0	100	22	62	0.00	28.28	29.52	SSW	11.8	37.0	13.75	48.7	48.1	52	45	
21	66	34	51.3	38.1	15	0	91	33	63	0.00	28.22	29.45	SE	5.7	17.1	6.79	48.3	46.4	50	43	
22	59	37	49.5	38.8	17	0	95	41	69	0.00	28.43	29.66	NNW	15.5	40.8	12.13	48.9	48.1	52	46	
23	62	26	45.4	30.2	21	0	99	28	61	0.00	28.61	29.85	SSE	6.9	25.4	14.08	47.2	45.7	52	40	
24	75	43	56.9	34.9	6	0	73	22	48	0.00	28.36	29.60	SSE	12.6	32.7	12.82	48.7	49.9	56	45	
25	45	30	38.5	24.4	27	0	73	37	58	0.00	28.72	29.97	NW	13.7	25.1	11.51	47.9	47.5	51	44	
26	45	23	33.1	19.7	31	0	86	32	61	0.00	28.99	30.25	NW	8.0	23.4	14.59	45.1	42.4	47	39	
27	49	24	35.4	15.9	28	0	78	21	49	0.00	29.03	30.29	NW	9.7	26.8	14.91	43.3	40.8	46	37	
28	54	26	39.7	21.1	25	0	81	28	50	0.00	28.96	30.21	WNW	10.4	26.6	14.73	43.1	41.4	47	37	
29	67	35	48.4	25.7	14	0	68	20	44	0.00	28.92	30.18	WNW	10.2	24.8	14.69	44.2	44.4	51	40	
30	75	31	53.2	23.9	12	0	84	11	39	0.00	28.81	30.07	SW	6.5	23.2	14.65	45.1	46.3	53	40	
31	73	35	52.7	27.5	11	0	73	17	41	0.00	28.64	29.89	S	4.3	17.9	14.67	46.6	48.5	55	43	
	54*	29*	41.6*	28.8*	<- Monthly Averages ->						28.78*	30.03*	S *	9.6*	40.8*	10.08*	45.3*	44.3*	48*	41*	
Temperature - Highest: 79*				Degree Days - Total HDD: 720*				Number of Days With:				Tmax ≥ 90: 0*				Rainfall ≥ 0.01 inch: 6*					
Lowest: -2*				Total CDD: 0*				Tmax ≤ 32: 2*				Rainfall ≥ 0.10 inch: 2*									
Rainfall: Monthly Total: 1.84* in.				Humidity - Highest: 100*				Tmin ≤ 32: 19*				Avg Wind Speed ≥ 10 mph: 14*									
Greatest 24 Hr: 1.59* in.				Lowest: 11*				Tmin ≤ 0: 1*				Max Wind Speed ≥ 30 mph: 6*									

Figure 19 Mesonet Data